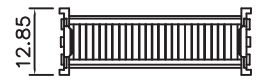
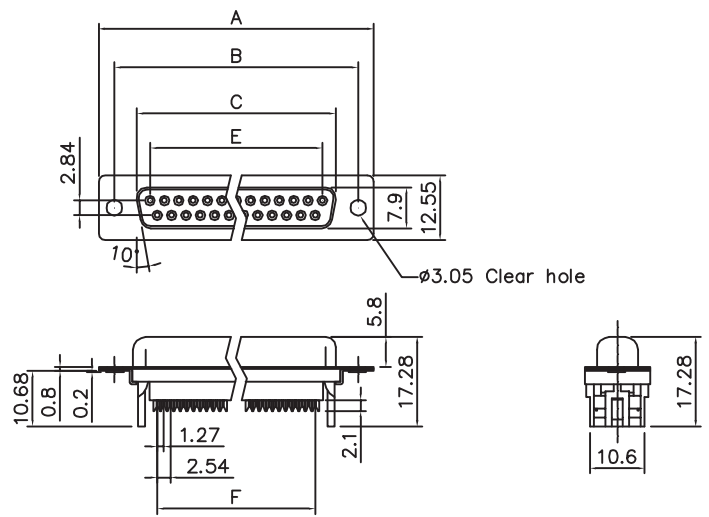


REV	DESCRIPTION	DATE
A	Initial Release	06:05:27



Cover

Without Insulator Support

Product Specification
Material
 Insulator: Glass-Filled Thermoplastic PBT, UL94V-0
 Contact: Copper alloy
 Shell: Steel, 100u" Tin Over 50u" min Copper

Electrical
 Contact Resistance: 20 milliohms
 Max at 1 AMP DC.
 Insulation Resistance: 1000
 megohms at 500 VDC
 Dielectric Withstanding Voltage:
 1000 VAC/rms 60Hz for 1 minute
 Current Rating: 3 AMP
 Volatge Rating: 250 VAC/rms 60Hz

PART NO.

DBDC	**	F	TM	-	02	*	00	*
(1)	(2)	(3)	(4)	(5)	(6)	(7)	(8)	

- (1) SERIES
.DBDC D-SUB I.D.C. CONNECTOR
- (2) NUMBER OF CONTACTS
.09 - 9 POSITIONS
.15 - 15 POSITIONS
.25 - 25 POSITIONS
.50 - 50 POSITIONS
- (3) CONTACT TYPE
.M - PLUG (MALE)
.F - SOCKET (FEMALE)
- (4) HOUSING CONSTRUCTION TYPES
.SP - STANDARD THROUGH HOLES (ALL PLASTIC TYPE)
.TP - WITH 4#-40UNC THREADED INSERT (ALL PLASTIC TYPE)
.SM - STANDARD THROUGH HOLES (WITH METAL SHELL)
.TM - WITH 4#-40UNC THREADED INSERT (WITH METAL SHELL)
.MP - WITH M3x0.5 THREADED INSERT (ALL PLASTIC TYPE)
.MM - WITH M3x0.5 THREADED INSERT (WITH METAL SHELL)
- (5) METAL SHELL FINISH
01 - WITHOUT METAL SHELL (ALL PLASTIC TYPE)
02 - TIN PLATED SHELL 03 - YELLOW CHROMATE OVER ZINC SHELL
- (6) COLOR CODES
.B - BLUE
.G - GRAY
.K - BLACK

- (7) CONTACT FINISH
.00 - SELECTED GOLD FLASH OVER 30u" NICKEL
.15 - 15u" SELECTED GOLD OVER 50u" NICKEL
.30 - 30u" SELECTED GOLD OVER 50u" NICKEL
- (8) STRAIN RELIEF
.N - WITHOUT STRAIN RELIEF
.P - PLASTIC STRAIN RELIEF

Dimensions

Positions	A	B	C	E	F
9	30.81	24.99	16.33	11.08	10.16
15	39.20	33.30	24.70	19.39	17.78
25	53.05	47.04	38.40	33.24	30.48
37	69.40	63.50	54.80	49.86	45.72

RoHS COMPLIANT

UNLESS OTHERWISE SPECIFIED,
 GENERAL TOLERANCE:
 DECIMALS ANGLES
 X .±0.38 [0.015] X* ±3°
 .X ±0.25 [0.010] .X* ±1.0°
 .XX ±0.13 [0.005]

	PANSTRONG COMPANY LTD.			DRAWN BY	TOMMY
				CHECKED	JUSTIN XING
TITLE:	IDC D-Sub Female for Flat Cable			APPROVED	KING CHIU
PART NO:	DBDCXXFTM02X00P			DRAWING NO.	
SCALE	1:1	REV	A	UNIT	mm

