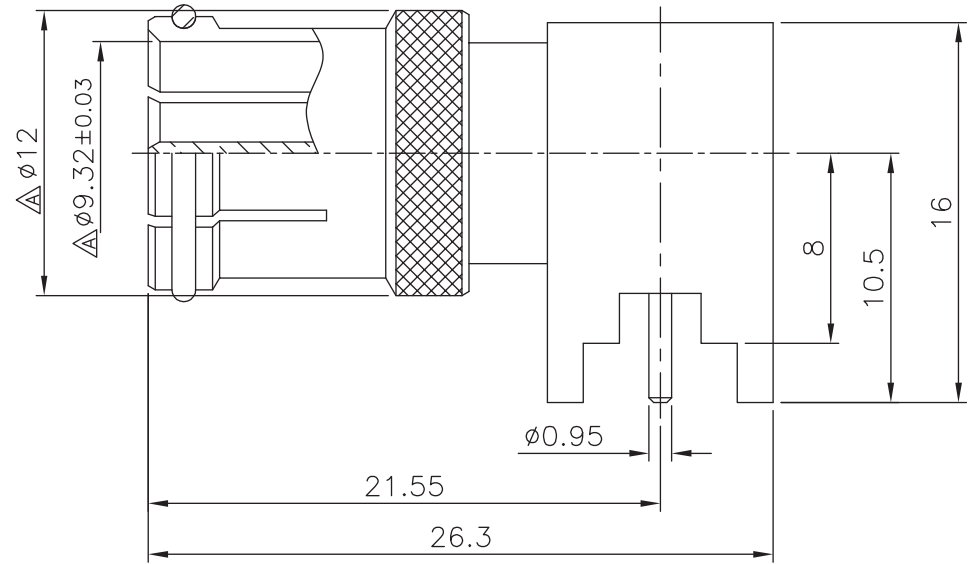


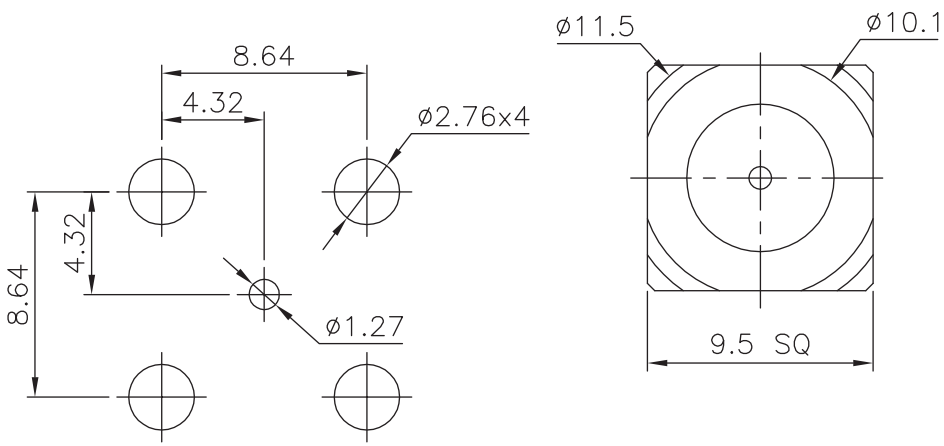
REV	DESCRIPTION	DATE
A1	ECN DRAWING CHANGE	07' 04.15
A2	ADD $\phi 12, \phi 9.32 \pm 0.03$	07' 08.05

REMARK: RoHS COMPLIANT



FINISH (PLATING THICKNESS IN MICRO-INCHES)
 1. BRASS PER QQ-B-626
 2. NICKEL PL 70 MIN THICK OVER COPPER STRIKE
 3. TEFLON MIL-P-19468

SPRING	SUS 303	NOTE 2
INSULATOR	NOTE 3	WHITE
CUBE BODY	NOTE 1	NOTE 2
CONTACT PIN	NOTE 1	NOTE 2
INSULATOR	NOTE 3	WHITE
BODY	NOTE 1	NOTE 2
DESCRIPTION	MATERIAL	FINISH



P.C.B. LAYOUT

DIMENSIONS ARE IN MILLIMETERS
UNLESS OTHERWISE SPECIFIED
TOLERANCES

0.5-6	= ±0.2
>6-30	= ±0.4
>30-120	= ±0.6
>120-315	= ±1
>315-1000	= ±1.6
ANGLES	= ±5°

PANSTRONG COMPANY LTD.	DRAWN BY	TOMMY
	CHECKED	
TITLE:	F R/A PCB MOUNT QUICK PLUG	
PART NO:	FM01N0210-004	
DRAW. BOX NO:		
SCALE	3:1	REV
UNIT	mm	A2
APPROVED	DRAW NO	