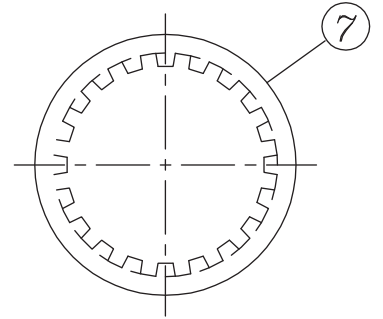
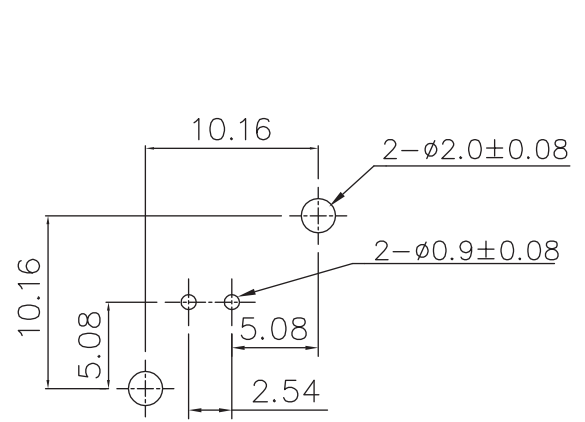
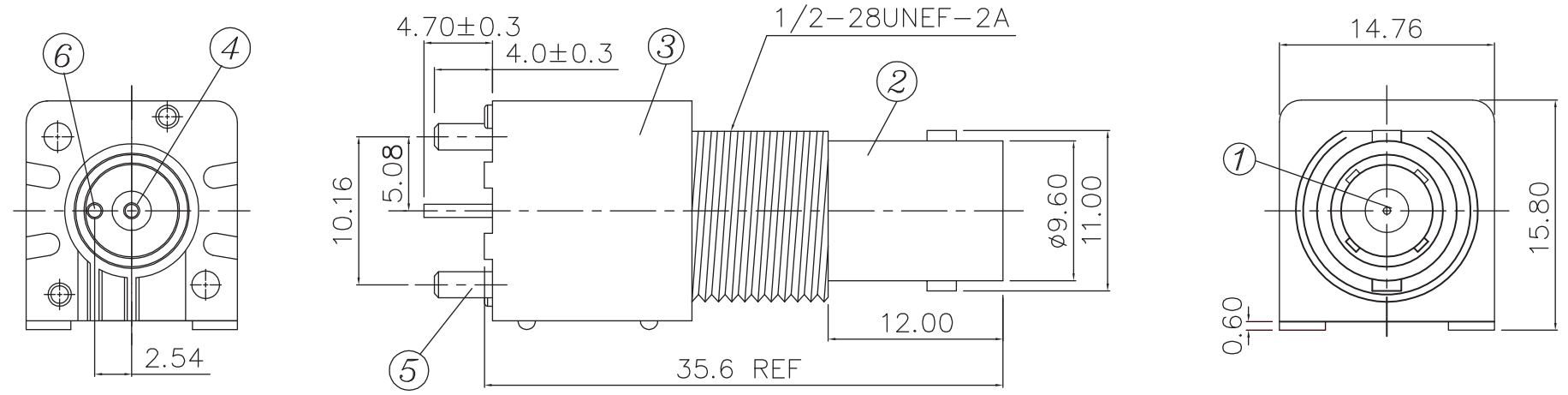
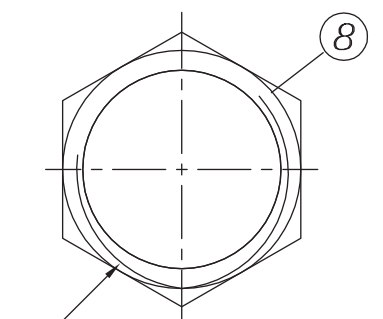


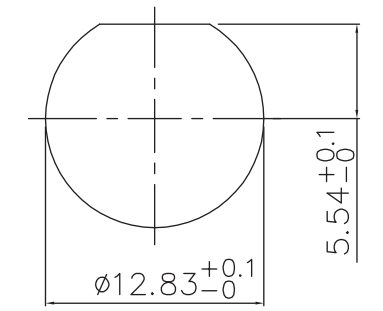
REV	DESCRIPTION	DATE
A	Initial Release	10'.02.12



LOCK WASHER



1/2-28UNEF-2B
CLAMP NUT



RECOMMENDED MOUNTING HOLE
MAXIMUM PANEL THICKNESS: 5.5MM

RECOMMENDED PC BOARD LAYOUT
WITHOUT MOUNTING POSTS

MATERIAL & FINISH

- ① CENTER CONTACT : PHOSPHOR BRONZE, GOLD PLATING
- ② BODY : ZINC ALLOY, NICKEL PLATING
- ③ HOUSING : PBT (94 V-0)
- ④ INSULATOR : PE-606
- ⑤ MOUNTING POST : BRASS, TIN PLATING
- ⑥ SOLDER TAIL : COPPER WIRE, TIN PLATING
- ⑦ WASHER : STEEL, NICKEL PLATING
- ⑧ NUT : BRASS, NICKEL PLATING

P/N	HOUSING COLOR
BF02W0301-2	WHITE
BF02K0301-2	BLACK

UNLESS OTHERWISE SPECIFIED:
DIMENSIONS ARE IN mm
TOLERANCES ARE:
X. ± 0.5
X.X ± 0.3
X.XX ± 0.2
ANGLES ± 3 DEG

PANSTRONG COMPANY LTD.				DRAWN BY		TOMMY	
				CHECKED			
TITLE:		50Ω V/A BNC PCB RECEPTACLE, METAL HOUSING WITH FITTING				APPROVED	
PART NO:		BF02X0301-2				DRAWING NO.	
SCALE		2:1	REV	A	UNIT	mm	