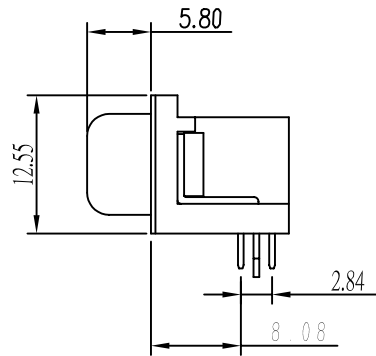
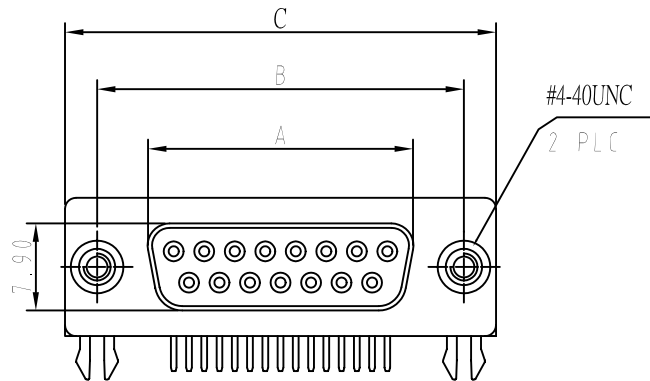


REV.	DESCRIPTION	DATE
A1	Initial Release	06.08.23



**ELECTRICAL CHARACTERISTICS**

Contact Current Rating: 3Amperes.  
 Dielectric Withstanding Voltage: AC 500V/60sec. r.m.s.  
 Insulation Resistance: 1000Megohms Minimum. at DC 500V.  
 Contact Resistance: 25 Milliohms Maximum.  
 Operating Temperature: -55°C to +105°C

**MECHANICAL CHARACTERISTIC**

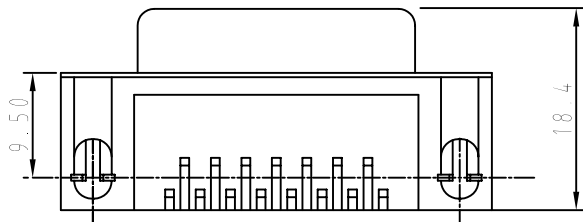
Contact Insertion Force: 341g. Maximum.  
 Contact Separation Force: 21g. Minimum.

**MATERIALS**

Contact: Copper Alloy.  
 Insulator: PBT.  
 Shell: SPCC  
 Z-Piece: Copper Alloy. (or Fe)  
 Screw: Copper Alloy.  
 Rivit: Fe. &. Copper Alloy.

**Note**

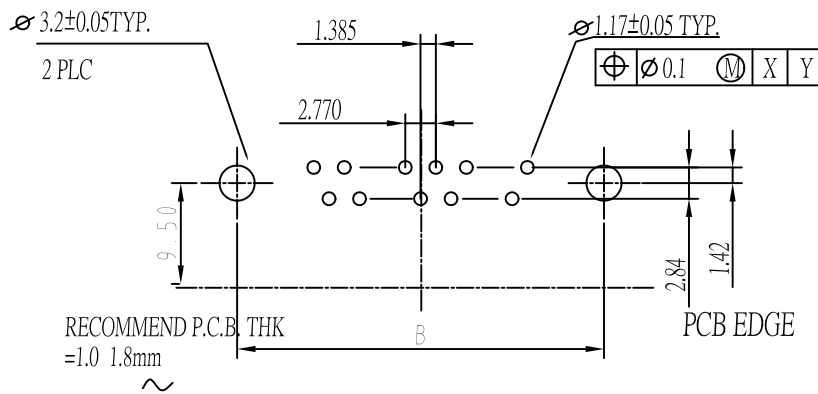
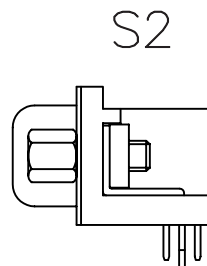
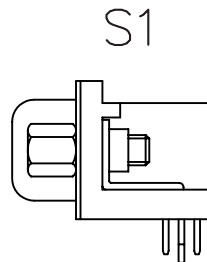
No.	A	B	C
09	16.33	24.99	30.81
15	24.66	33.32	39.14
25	38.38	47.04	53.04
37	54.83	63.50	69.32



PART NO. DBxxF0101K00-S1E

Contact Gold Plating:  
 00: Selective Gold Flash  
 G0: Full Gold Flash

Mounting and Screws Options  
 S1: Fixed UNC#4-40 Screws and Board Locks  
 S2: #4-40 Thread Rivet with Board Locks, Screws Attached Separately  
 S3: #4-40 Thread Rivet with Board Locks, without Screws



DWG NO:		MATERIAL:		<b>PANSTRONG COMPANY LTD.</b>	
MODEL NO:		FINSH:			
UNIT: mm	SIZE:	COLOR:		PART NAME: D-SUB FeMale 90D	
TOLERANCE UNSPECIFIED		DR: TOMMY		PART NO: DBxxF0101K00-S1E	
.x	±0.3	CHK:		REV:	
.xx	±0.20	APP:		SCALE: 1.5:1	
.xxx	±0.100			SHEET: 1 of 1	
ANG.	±1°				