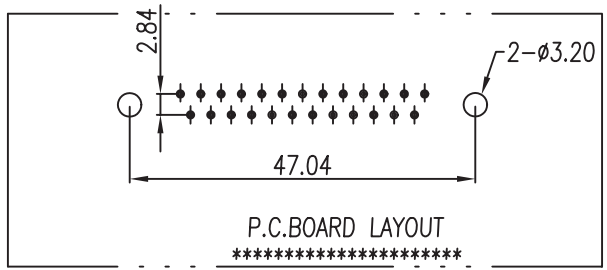
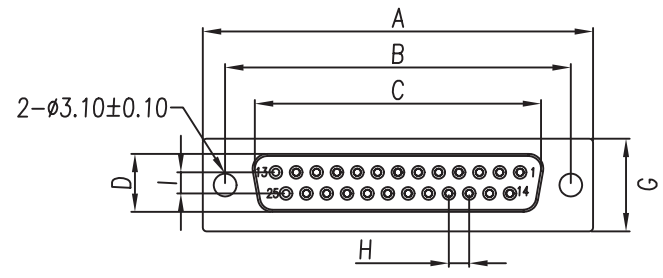
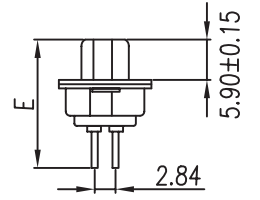
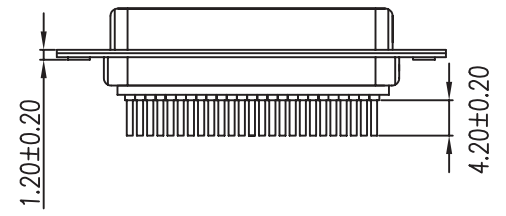


REV	DESCRIPTION	APPROVAL	DATE
A	Initial Release		06'.04.21



- Note:
- Material:
 - Insulator: P.B.T UL 94-V0 rated.
 - Contact: Brass, t=0.20mm.
 - Shell: Cold rolled steel, t=0.40mm.
 - Specification:
 - Current rating: 1 A Max.
 - Dielectric withstanding voltage: 500 V(ac) for 1 minute.
 - Contact resistance: 30 mΩ Max.
 - Insulation resistance: 1000 MΩ Min at DC 500V.
 - Total mating force: 5.0 Kgf Max.
 - Total unmating force: 2.5 Kgf Min.
 - Temperature range: -55°C~+105°C



Order Information

DB xx F0102K xx E x

Contact Pin Numbers: 09, 15, 25, 37

Optional Screw Accessories: A, B, C (refer to the drawing table)

Insulator Color: B: Blue K: Black W: White

Contact Gold Plating:
 00: Selective Gold
 10: 10u" Selective Gold
 30: 30u" Selective Gold
 G1: Full Gold Flash

Optional Screw Accessories:

A	Front Riveted Hex Nut #4-40	B	Rear Riveted Hex Nut #4-40	C	Hex Nut #4-40 and Board Lock Bolts

No.	Part Name	Q'ty	Material	Remarks & Thickness	Finish
8	Hex Screw	2	Brass	H5*10	Tin Plated
7	Boardlock NUT	2	Brass	H4.75*11.5	Nickel Plated
6	8.0 Nut	2	Brass	H4.75*8.0	Nickel Plated
5	3B Nut	2	Brass	H4.75*4.75	Nickel Plated
4	Back-shell	1	Cold Rolled Steel	T=0.40mm	Tin Plated
3	Front-shell	1	Cold Rolled Steel	T=0.40mm	Nickel Plated
2	Contact	9~37	Brass	T=0.20mm	Gold Flashed
1	Housing	2	P.B.T	UL 94-V0	Black/Blue/White

TOLERANCE UNSPECIFIED	
.x	±0.3
.xx	±0.20
.xxx	±0.100
ANG.	±1°

PART NO	A±0.25	B±0.25	C±0.25	D±0.25	E±0.25	G±0.25	H±0.20	I±0.20
DB09F0102***E	30.80	25.00	16.30	7.90	16.80	12.60	2.77	2.84
DB15F0102***E	39.20	33.32	24.70	7.90	16.80	12.60	2.77	2.84
DB25F0102***E	53.05	47.04	38.40	7.90	16.80	12.60	2.77	2.84
DB37F0102***E	69.40	63.50	54.80	7.90	16.80	12.60	2.77	2.84

	DRAWN BY	TOMMY
	CHECKED	
TITLE:	D-SUB P.C.B SOLDER(F)	
PART NO:	DBxxF0102K	
File Number:		
SCALE	1:1	REV A
UNIT	mm	