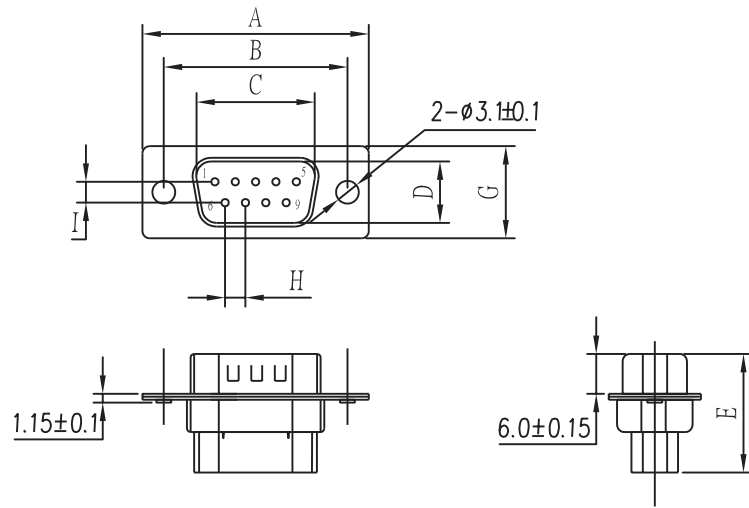


REV	DESCRIPTION	DATE
A	Initial Release	02'.04.05



A	UP SCREW NUT	B	DOWN SCREW NUT

Pos. No.	A±0.25	B±0.20	C±0.20	D±0.20	E±0.30	G±0.25	H±0.05	I±0.10
9	30.81	24.99	16.92	8.36	17.4	12.55	2.77	2.84
15	39.25	33.32	25.25	8.36	17.4	12.55	2.77	2.84
25	53.04	47.04	38.96	8.36	17.4	12.55	2.77	2.84
37	69.50	63.50	55.42	8.36	17.4	12.55	2.77	2.84

6	8.0 Nut	2	Copper alloy	H4.75*8.0	Nickel Plated
5	3B Nut	2	Copper alloy	H4.75*4.75	Nickel Plated
4	Back-shell	1	Cold Rolled Steel	T=040mm	Tin Plated
3	Front-shell	1	Cold Rolled Steel	T=0.40mm	Nickel Plated
2	Contact	9~37	Copper alloy	T=0.20mm	Gold Flashed
1	Housing	2	P.B.T	UL 94-V0	Black/Blue/White
No.	Part Name	Q'ty	Material		Finish

TOLERANCE UNSPECIFIED	
.x	±0.3
.xx	±0.20
.xxx	±0.100
ANG.	±1°

1.Material:

- 1.1 Insulator: P.B.T UL 94-V0 rated.
- 1.2 Contact: Copper alloy,t=0.20mm.
- 1.3 Shell: Cold rolled steel,t=0.40mm.

2.Specification:

- 2.1 Current rating: 1 A Max.
- 2.2 Dielectric withstanding voltage: 500 V(ac) for 1 minute.
- 2.3 Contact resistance: 30 mΩ Max.
- 2.4 Insulation resistance: 1000 MΩ Min at DC 500V.
- 2.5 Total mating force: 7.0 Kgf Max.
- 2.6 Total unmating force: 1.5 Kgf Min.
- 2.7 Temperature range: -55°C~+105°C

Part No. DB $\frac{xx}{1}$ M02K $\frac{xx}{2}$ $\frac{x}{3}$ E

- 1. Contact Positions: 9, 15, 25, 37
- 2. Contact Plating: 00:Selective Flash Gold
15:Selective 15u" Gold
30:Selective 30u" Gold
- 3. Shell Plating: Blank:Front Nickel and Rear Tin
T:Both Front and Rear Tin
Z:Front Zinc

PANSTRONG COMPANY LTD.				DRAWN BY		TOMMY	
				CHECKED			
TITLE:		D-SUB CRIMP(M)		APPROVED			
PART NO:		DBxxM02KxxxE		DRAW NO			
File Number:							
SCALE	1:1	REV	A	UNIT	mm		