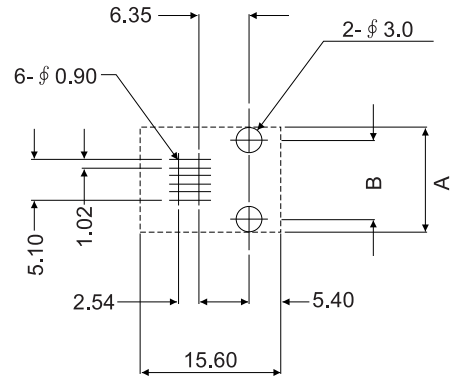
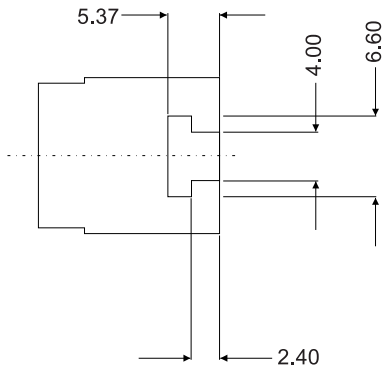


| REV | DESCRIPTION | DATE |
|-----|-----------------|----------|
| A | Initial Release | 06.07.25 |



PCB LAYOUT/TOP VIEW

ELECTRICAL

- 1.VOLTAGE: 150VAC RMS
- 2.CURRENT RATING: 15 AMPS
- 3.CONTACT RESISTNACE: 20MILLMHOSMINI
- 4.INSULATION RESISTANCE: 500 MEGOHMS MINI
- 5.DIELECTRIC STRENGTH: 1000 VAC RMS 60Hz 1 MIN

MECHANICAL

- 1.INSERTION FORCE: 900g
- 2.REIENTION STRENGTH :7.7kg
- 3.DURABILITY: 750 MATING CYCLES MIN
- 4.PCB RETENTION(PRE-SOLDER) 1LB
- 5.PCB RETENTION(POST-SOLDER) 10LB

MATERIAL & FINISH

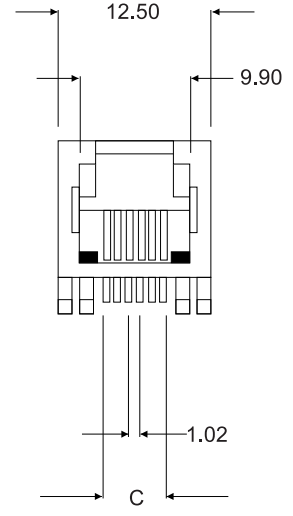
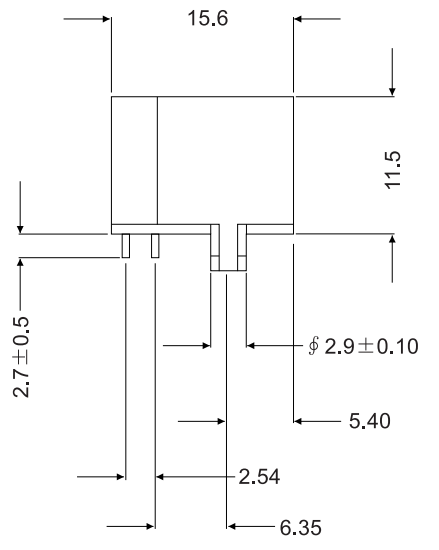
- 1.HOUSING: GLASS FILLED PBT(UL94V-0)
- 2.CONTACT: 0.45mm PHOSPHOR BRONZE GOLD PLATING OVER NICKEL
- 3.GOLD PLATING, 3u INCH, 6u INCH, 15u INCH, 30u INCH, 50u INCH

ENVIRONMENT

- 1.STORAGE TEMPERATURE: -40°C ~ +80°C
- 2.OPERATING TEMPERATURE: 0°C ~ 70°C

PART NO. MJL1-6601Kxx-P1

Contact Pins 2.4.6. GOLD PLATING 03, 06, 15, 30, 50u"



| TOLERANCE | |
|-----------|-------|
| .X | ±0.3 |
| .XX | ±0.20 |

| | | | |
|-------------------------------|---------------|---------|----|
| PANSTRONG COMPANY LTD. | DRAWN BY | TOMMY | |
| | CHECKED | | |
| TITLE: | APPROVED | | |
| PART NO: | MJL1-6601K-P1 | DRAW NO | |
| DRAW. BOX NO: | | UNIT | mm |
| SCALE | 4:1 | REV | A |
| | | | |