

REV	DESCRIPTION	APPROVAL	DATE
A	Initial Release		00'.11.02

■ MATERIAL

INSULATOR: GLASS-REINFORCED THERMOPLASTIC.  
CONTACT: COPPER ALLOY.  
PLATING: ALL TIN,LEAD FREE.

■ ELECTRICAL

CURRENT RATING: 0.5 AMP.  
DIELECTRIC WITHSTANDING VOLTAGE: 500 VAC MIN.  
INSULATION RESISTANCE: 1000 MEGAOHMS MIN.  
CONTACT RESISTANCE: 30 MILLIOHMS MAX.

■ ENVIRONMENTAL

TEMPERATURE RANGE: -55°C TO 85°C.

■ PART NO.

FP XX - C 03 S K U N C  
1 2 3 4 5 6 7

1.Number of Conatct Pins:

03...30

2.Pitch Type

A:2.54mm B:1.25mm C:1.00mm

3.Processing Type:

01: Through-Hole

03: SMT

4.Cable Entry Type:

R: Right Angle(Side Entry)

S: Vertical(Top Entry)

5.Housing Color:

K: Black

6.Contact Type:

U: Double Latch Contact

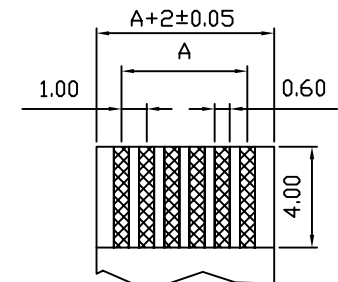
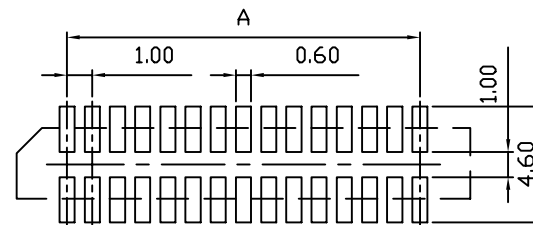
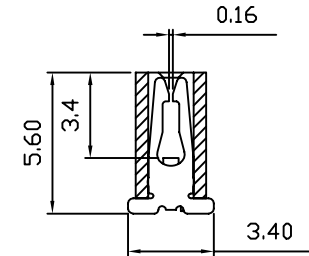
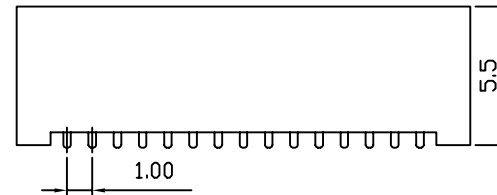
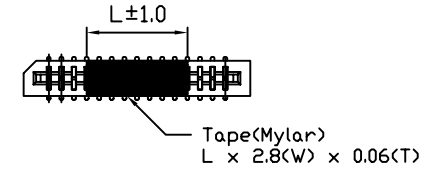
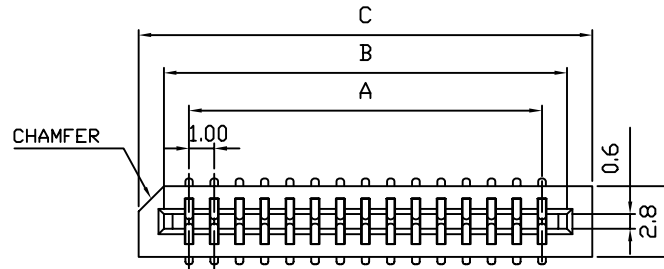
S: Single Side Contact

7.Z: ZIF Type N: None-ZIF Type

■ DIMENSION TABLE

Circuits	Dimension			L
	A	B	C	
3	2.00	4.1	6	4
4	3.00	5.1	7	
5	4.00	6.1	8	
6	5.00	7.1	9	
7	6.00	8.1	10	8
8	7.00	9.1	11	
9	8.00	10.1	12	
10	9.00	11.1	13	
11	10.00	12.1	14	12
12	11.00	13.1	15	
13	12.00	14.1	16	
14	13.00	15.1	17	
15	14.00	16.1	18	
16	15.00	17.1	19	
17	16.00	18.1	20	
18	17.00	19.1	21	
19	18.00	20.1	22	

Circuits	Dimension				L
	A	B	C	L	
20	19.00	21.1	23	12	
21	20.00	22.1	24		
22	21.00	23.1	25		
23	22.00	24.1	26		
24	23.00	25.1	27		
25	24.00	26.1	28		
26	25.00	27.1	29		
27	26.00	28.1	30		
28	27.00	29.1	31		
29	28.00	30.1	32		
30	29.00	31.1	33		



RECOMMENDED PCB LAYOUT

FPC/FFC T=0.30±0.05

**TOLERANCES**

X'±	X.±0.40
.X'±	.X±0.30
.XX'±	.XX±0.20
.XXX'±	.XXX±0.10

	PANSTRONG COMPANY LTD.			DRAWN BY	TOMMY
	TITLE: FFC/FPC Connector Non ZIF Top Entry Contact SMT Type Raralled PCB Layout(Pitch 1.0mm)			CHECKED	
PART NO: FPxx-C03SKUNC			APPROVED		
File Number:			DRAW NO		
SCALE	1:1	REV	A	UNIT	mm