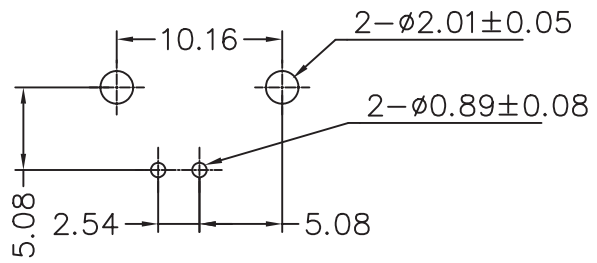
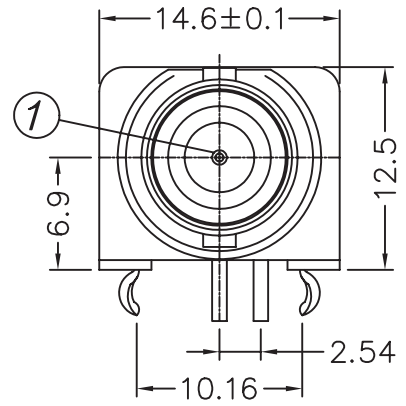
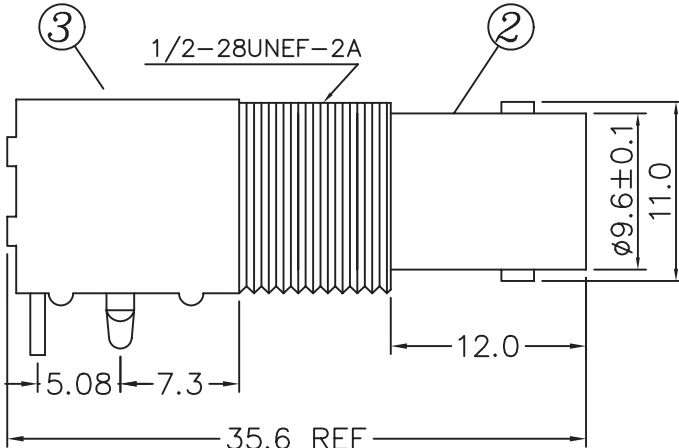
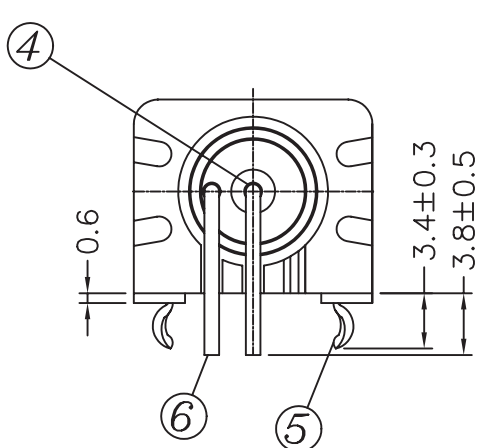
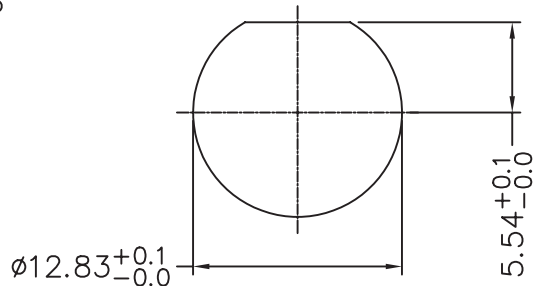


REV	DESCRIPTION	DATE
A	Initial Release	04'.06.08



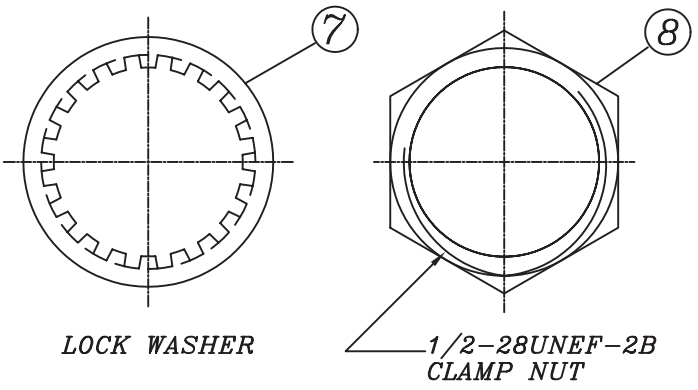
**RECOMMENDED PC BOARD LAYOUT  
WITHOUT MOUNTING POSTS**



**RECOMMENDED MOUNTING HOLE  
MAXIMUM PANEL THICKNESS: 5.5MM**

**MATERIAL & FINISH**

- ① CENTER CONTACT : BRONZE, GOLD PLATING 30u"
- ② BODY : ZINC ALLOY NICKEL PLATING
- ③ HOUSING : PBT (94 V-0)
- ④ INSULATOR : PE-606
- ⑤ MOUNTING POST : BRONZE, TIN PLATING
- ⑥ SOLDER TAIL : COPPER WIRE, TIN PLATING
- ⑦ WASHER : STEEL, NICKEL PLATING
- ⑧ NUT : BRASS, NICKEL PLATING



**LOCK WASHER**

**1/2-28UNEF-2B  
CLAMP NUT**

Tolerances
X. ±0.5
X.X ±0.3
X.XX ±0.2

<b>PANSTRONG COMPANY LTD.</b>	DRAWN BY	TOMMY
	CHECKED	
TITLE:	75 OHM BNC R/A PCB MOUNT JACK	
PART NO:	BF01W0302-L2	
SCALE	2:1	REV A
UNIT	mm	
APPROVED	DRAWING NO.	