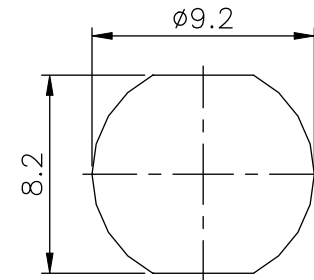
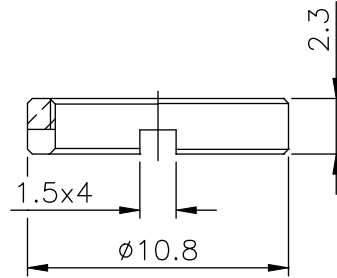
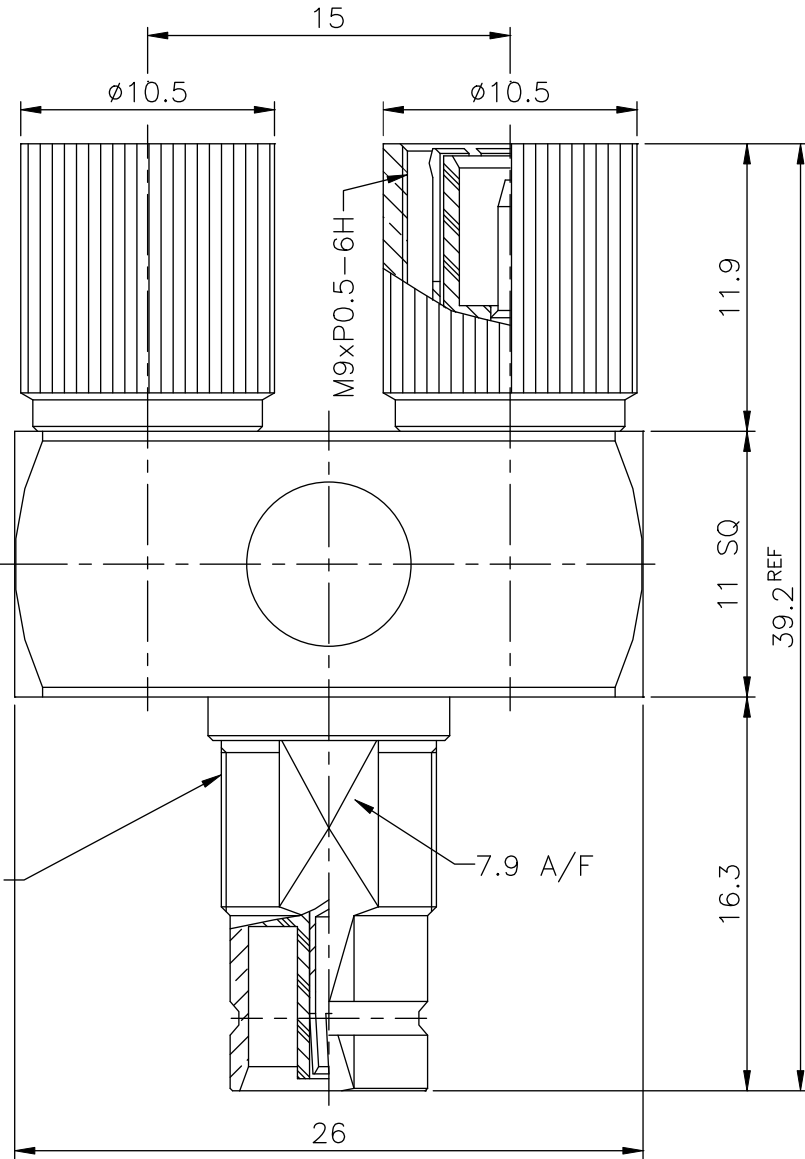


REMARK: RoHS COMPLIANT

REV	DESCRIPTION	DATE
A	Initial Release	06'.08.24



RECOMMENDED MOUNTING HOLE

- FINISH (PLATING THICKNESS IN MICRO-INCHES)
1. BRASS PER QQ-B-626
 2. NICKEL PL 70 MIN THICK OVER COPPER STRIKE
 3. GOLD PL 3 MIN OVER NICKEL PL 70 MIN THICK OVER COPPER STRIKE
 4. TEFLON MIL-P-19468
 5. PHOSPHOR BRONZE PER QQ-B-750

NUT	NOTE 1	NOTE 2
COVER	NOTE 1	NOTE 2
BODY	NOTE 1	NOTE 2
INSULATOR	NOTE 4	WHITE
CONTACT PIN	NOTE 5	NOTE 3
SHELL	NOTE 1	NOTE 2
CONTACT BODY	NOTE 5	NOTE 3
CONTACT PIN	NOTE 1	NOTE 3
INSULATOR	NOTE 4	WHITE
BODY	NOTE 1	NOTE 2
CONTACT PIN	NOTE 1	NOTE 3
INSULATOR	NOTE 4	WHITE
CUBE BODY	NOTE 1	NOTE 2
DESCRIPTION	MATERIAL	FINISH

M9xP0.5-6g

7.9 A/F

UNLESS OTHERWISE SPECIFIED TOLERANCES
 0.5-6 = ±0.2
 >6-20 = ±0.4
 >20-120 = ±0.6
 >120-315 = ±1
 >315-1000 = ±1.6
 ANGLES = ±5°

	PANSTRONG COMPANY LTD.		DRAWN BY	TOMMY
			CHECKED	
TITLE:	1.6/5.6 Y-LINK P-J-P ADATOR		APPROVED	
PART NO:	1656F/2xM-Y01		DRAWING NO.	
SCALE	3:1	REV	A	UNIT mm

