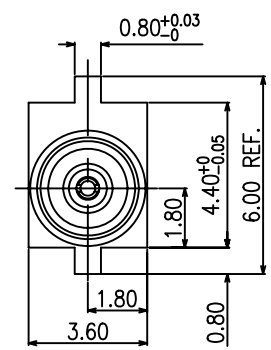
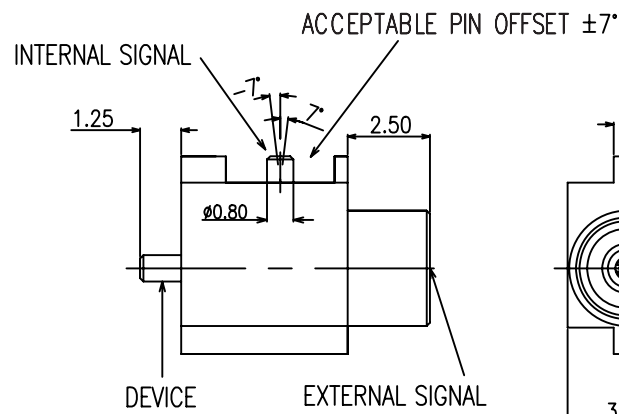
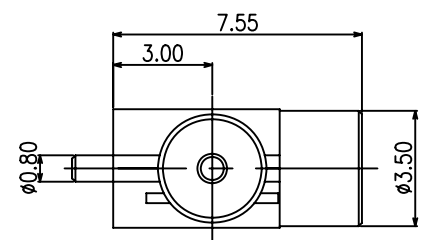
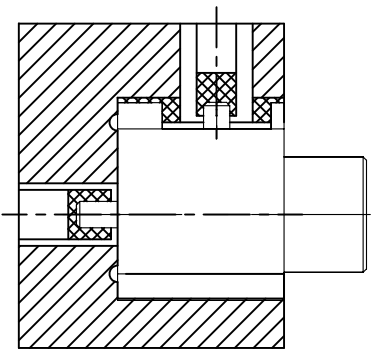
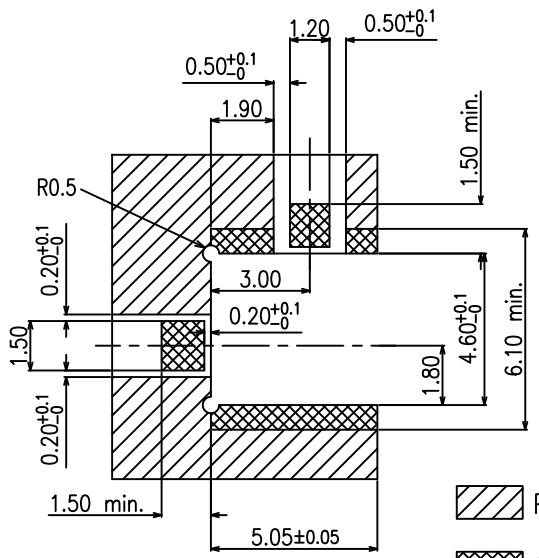


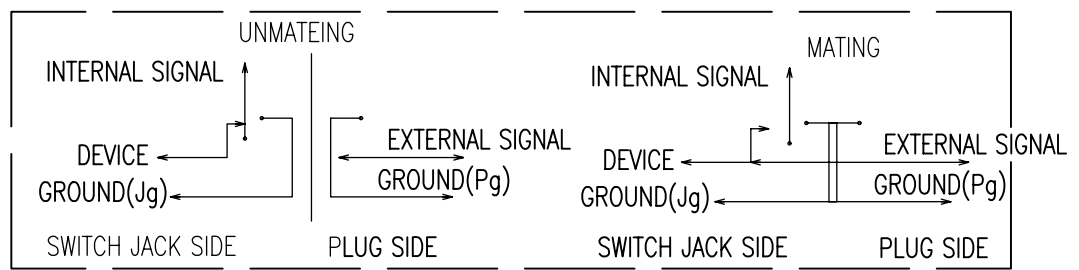
REV	DESCRIPTION	DATE
A	Initial Release	14'.02.25



- NOTES: TYPICAL SPECIFICATIONS
- 1.0. ELECTRICAL DATA
 - 1.1. FREQUENCY RANGE --- DC ... 6 GHz
 - 1.2. IMPEDANC --- 50 Ohms
 - 1.3. VSWR --- INTERNAL SIGNAL DC ~ 6 GHz < 1.6
EXTERNAL SIGNAL DC ~ 6 GHz < 1.6
 - 1.4. INSERTION LOSS --- DC ~ 6GHz < -0.6 dB
 - 1.5. DIELECTRIC WITHSTANDING VOLTAGE --- 500 Vrms
 - 1.6. CENTER CONTACT RESISTANCE --- 5.0 mini-Ohms
 - 1.7. OUTER CONTACT RESISTANCE --- 2.5 mini-Ohms
 - 1.8. WORKING VOLTAGE --- 125 Vrms
 - 1.9. INSULATION RESISTANCE --- 500 MΩ min
 - 2.0. MECHANICAL DATA
 - 2.1. COUPLING METHOD --- SNAP-ON
 - 2.2. DURABILITY (MATING/UNMATING) --- 500 Cycles
 - 2.3. TEMPERATURE RANGE: -55°C TO 155°C
 - 2.4. ENGAGEMENT FORCE --- 2.0 kgf max.
 - 2.5. DISENGAGEMENT FORCE --- 0.5 kgf min.
 - 2.6. CORROSION --- Per MIL-STD-202 Method 101 Test condition B



PATTERN
 LAND FOR SOLDER PASTE



BOM

ITEM	ITEM NAME	MATERIAL	FINISH	Q'TY/EA	REMARK
8	CONTACT SPRING	STAINLES STEEL		1	
7	INNER INSULATOR	TEFLON		1	
6	REAR INSULATOR	TEFLON		1	
5	FEMALE INSULATOR	TEFLON		1	
4	INNER PASS CONTACT	BRASS	GOLD	1	
3	INNER PIN	BRASS	GOLD	1	
2	FEMALE CONDUCTOR	PHosphor Bronze	GOLD	1	
1	JACK BODY	BARSS	GOLD	1	

TOLERANCES
 X ±0.50 .XX ±0.15
 .X ±0.25 .XXX ±0.10
 ANGLES ±2°

PANSTRONG COMPANY LTD.

TITLE:		MMCX SWITCH JACK EDGE CARD PCB SMT		DRAWN BY	TOMMY
PART NO:		MXF01G0108G-SW		CHECKED	
SCALE		1:1	REV	A	APPROVED
UNIT	mm			DRAWING NO.	MMCX-50111T0