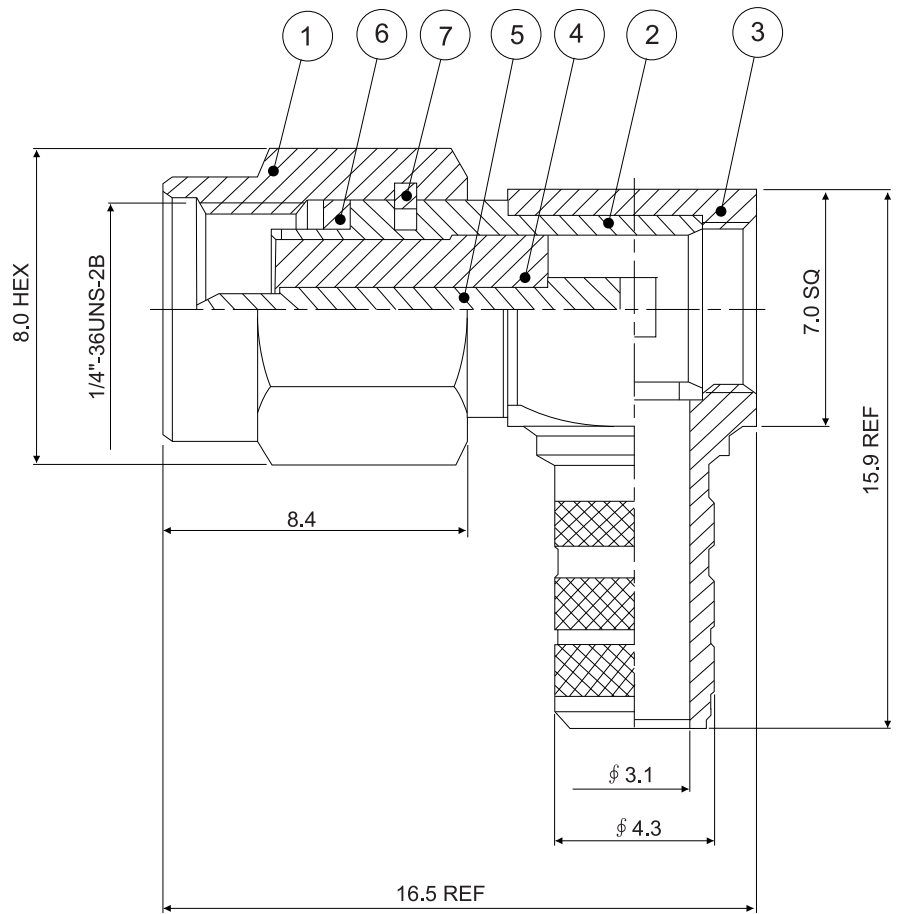
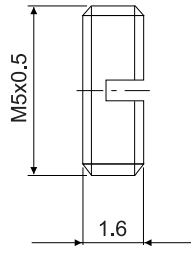


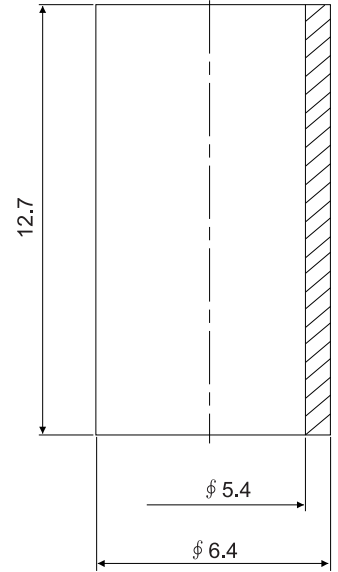
| REV | DESCRIPTION | DATE |
|-----|-----------------|----------|
| A | Initial Release | 07.04.03 |



8



9



| | | | | |
|----|-------------|----------|---------|------|
| 9 | RING | NOTE 1 | NOTE 2 | 1 |
| 8 | SPIGOT | NOTE 1 | NOTE 2 | 1 |
| 7 | C RING | BeCu | NONE | 1 |
| 6 | GASKET | SILICON | RED | 1 |
| 5 | CONTACT PIN | NOTE 1 | NOTE 2 | 1 |
| 4 | INSULATOR | NOTE 3 | NATURAL | 1 |
| 3 | BODY | NOTE 1 | NOTE 2 | 1 |
| 2 | BODY | NOTE 1 | NOTE 2 | 1 |
| 1 | SHELL | NOTE 1 | NOTE 2 | 1 |
| NO | DESCRIPTION | MATERIAL | FINISH | Q'TY |

- BRASS PER QQ-B-626
- GOLD PL 3 MIN THICK OVER NICKEL PL 70 MIN THICK OVER COPPER STRIKE
- TEFLON MIL-P-19468

| | | | | | | | |
|-------------------------------|---|--|---|----------|----|----------|--|
| PANSTRONG COMPANY LTD. | | | | DRAWN BY | | TOMMY | |
| | | | | CHECKED | | | |
| TITLE: | | RIGHT ANGLE SMA MALE CRIMP TYEP RG58/U | | | | APPROVED | |
| PART NO: | | SMAM01G0111-58 | | | | DRAW NO | |
| File Number: | | | | | | | |
| SCALE | / | REV | A | UNIT | mm | | |