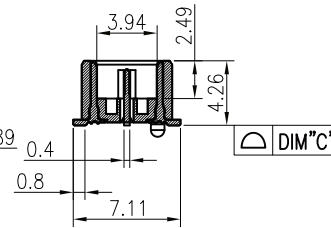
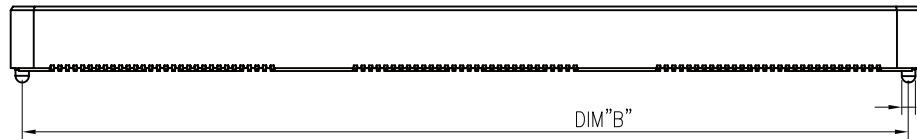
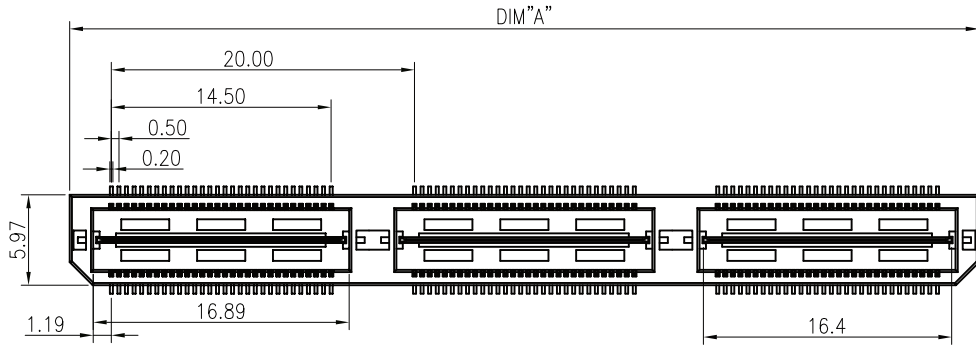


REV	DESCRIPTION	DATE
A	Initial Release	18.12.11

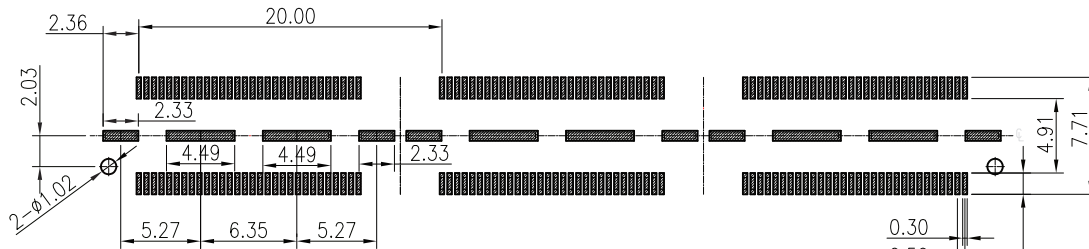
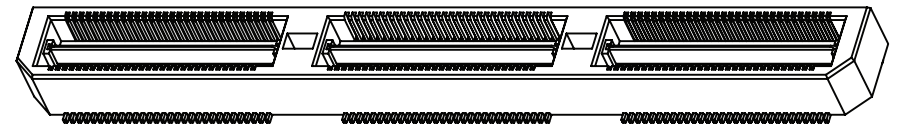
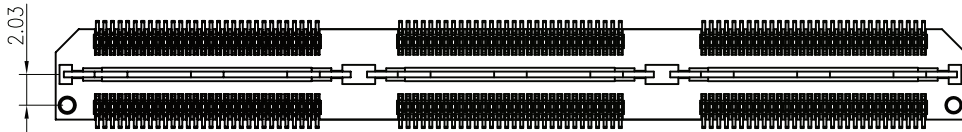
NOTES:

- HUOSING: LCP HIGH-TEMP THERMOPLASTIC UL94V-0 COLOR:BLACK
- TERMINAL/GROUND PLANE:PHOSPHOR BRONZE  
PLATING:10u" GOLD IN CONTACT AREA, MATTE TIN ON TAIL.
- CODING INFORMATION: BBC 542D-xxxP-B3R-01

- WATER CODE
- PACKING: R: CARRIER REEL
- MATERIAL: 3:LCP
- COLOR: B:BLACK
- P:PLUG PIN
- PLATING: G:GOLD FLASH 2:3u" GOLD IN CONTACT AREA, MATTE TIN ON TAIL  
3:5u" GOLD IN CONTACT AREA, MATTE TIN ON TAIL.  
4:10u" GOLD IN CONTACT AREA, MATTE TIN ON TAIL.  
5:15u" GOLD IN CONTACT AREA, MATTE TIN ON TAIL.  
6:30u" GOLD IN CONTACT AREA, MATTE TIN ON TAIL.
- 0.5 BTB  
HIGHLY: 42--4.26H



NO. of contacts	Dimensions		
	A.	B.	C.
60	20.00	18.48	0.10
120	40.00	38.48	0.10
180	60.00	58.48	0.15
240	80.00	78.48	0.15
300	100.00	98.48	0.15



GENERAL TOLERANCE	
.X	±0.30
.XX	±0.20
.XXX	±0.10
ANGLES	±0° 30'

PANSTRONG COMPANY LTD.				DRAWN BY		TOMMY
				CHECKED		TOMMY
TITLE:		0.5mm DOUBLE ROW BTB PLUG H4.26		APPROVED		CAROL
PART NO:		BBC542D-xxxP-B3R-01		DRAWING NO.		
SCALE		1:1	REV	A	UNIT	mm