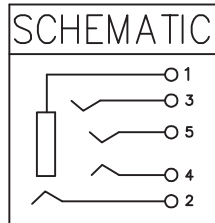
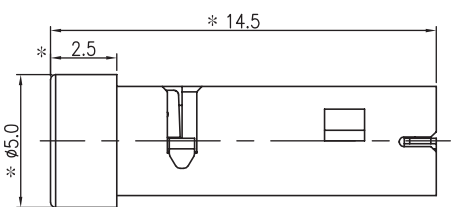
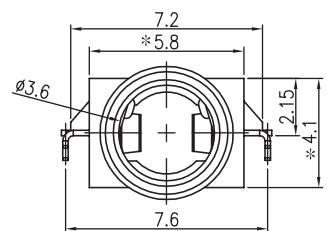
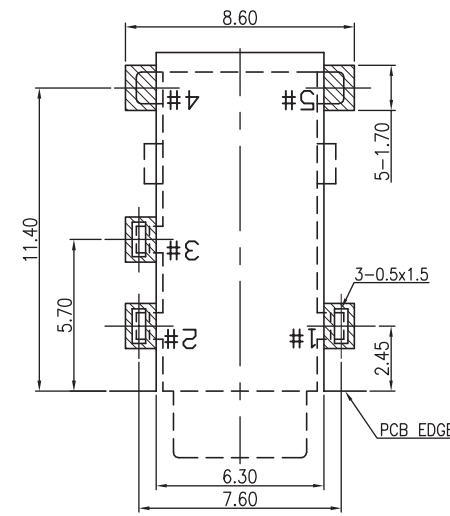
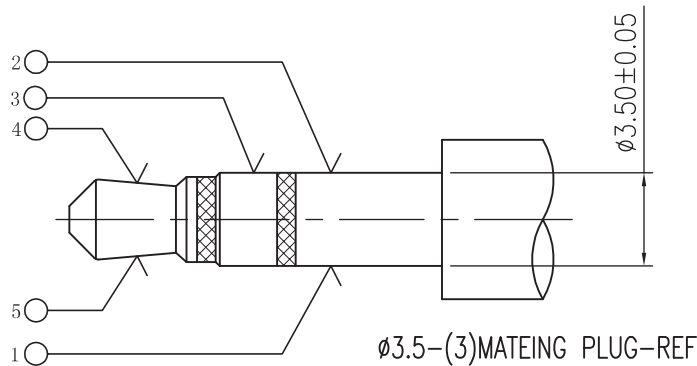
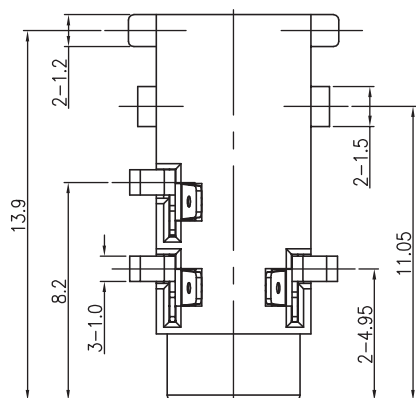


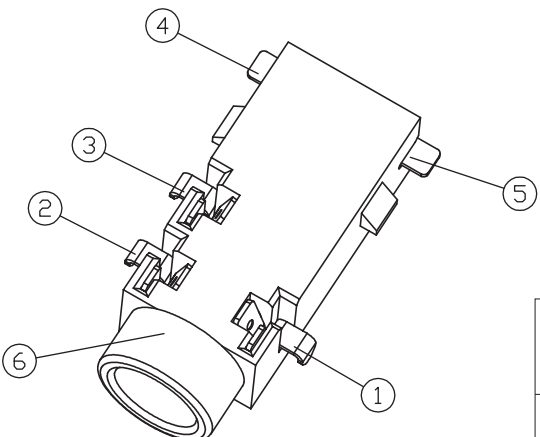
\*: INDICATES THE KEY DIMENSIONS

REV	DESCRIPTION	DATE
A	Initial Release	15.04.10



Recommend of PC Board Holes  
Tolerance : ±0.05(Top view)

- Notes:
- Electrical Characteristics:
    - Rating : DC 30V 0.5 A ;
    - Contact Resistance: 30mΩ Max.(Initial),  
Between plug and contact 100mΩ Max;  
(Final) After Life test: ≤60mΩ ;
    - Dielectric Withstanding Voltage: 500V AC for One Minute ;
    - Insulation Resistance: 100MΩ Min. Measured By 500 VDC;
  - Mechanical Characteristics:
    - Plug Insertion Force 0.3~3.0Kgf (initial),  
0.3~3.0Kgf (Final) life test;
    - Plug Extraction Force: 0.3~3.0Kgf (initial),  
0.3~3.0Kgf (Final) life test;
  - Durability Test: 5,000 Cycles min;
  - Operating temperature:-25°C ~ +70°C;
  - Soldering Heat Resistance Reflow Soldering 260°C;
  - Plug Interface Dimensions Conform To EIAJ RC-5325A Spec;
  - Packaging:Tape Reel.;



### LEAD FREE

6	HOUSING	1	PA9T	UL-94V0(BLACK)
5	5# TERMINAL	1	COPPER ALLOY	t=0.20 MB: Ni Gold Flash
4	4# TERMINAL	1	COPPER ALLOY	t=0.20 MB: Ni Gold Flash
3	3# TERMINAL	1	COPPER ALLOY	t=0.20 MB: Ni Gold Flash
2	2# TERMINAL	1	COPPER ALLOY	t=0.20 MB: Ni Gold Flash
1	1# TERMINAL	1	COPPER ALLOY	t=0.20 MB: Ni Gold Flash
LTR	PART NAME	QTY	MATERIAL	REMARK

				DRAWN BY		TOMMY
				CHECKED		TOMMY
TITLE:		MINIATURE JACK		APPROVED		CAROL
PART NO:		PJ3.5-SM-28AG		DRAWING NO.		
SCALE		/	REV	A	UNIT	mm

-TOLERANCES-  
UNLESS OTHERWISE SPECIFIED  
X.X ±0.30 X.X' ±5"  
X.XX ±0.25 X.XX' ±1"  
X.XXX ±0.20