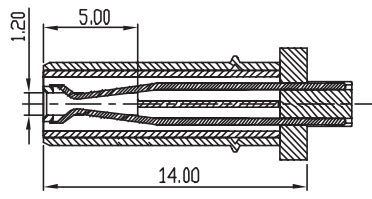
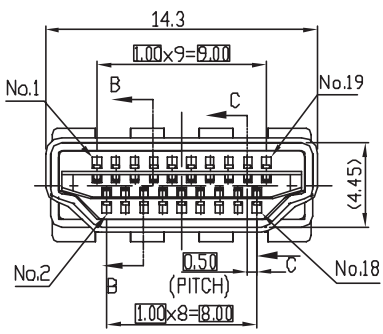


RoHS Compliant

REV	DESCRIPTION	DATE
A	Initial Release	05'.12.05



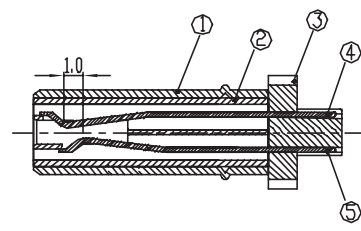
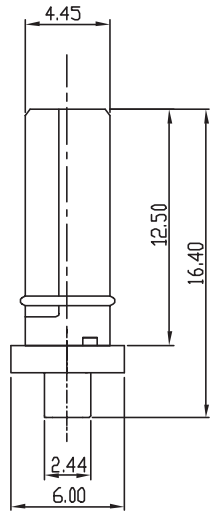
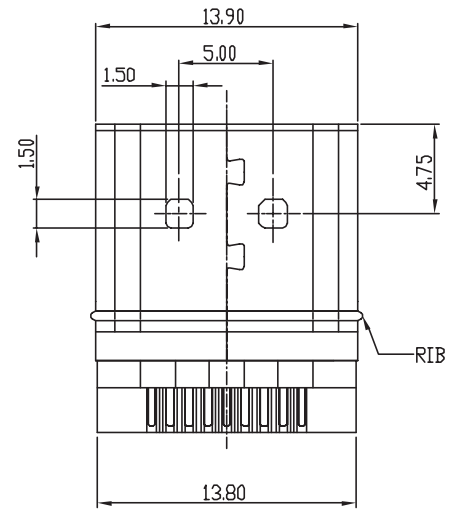
SECTION B-B
SCALE : 1 : 1

- MECHANICAL :
 - INSERTION FORCE :44.1 N MAX
 - WITHDRAWAL FORCE :9.8 N MIN.
- ELECTRICAL :
 - CONTACT CURRENT RATING: 0.5A MIN.
 - VOLTAGE RATING :40V AC (rms)
 - WITHSTANDING VOLTAGE: 500 VAC FOR 1 MINUTE.
 - INSULATION RESISTANCE: 100 MEGOHMS MIN.
 - CONTACT RESISTANCE: 30 MILLIOHMS MAX.
- ENVIRONMENTAL :
 - OPERATING TEMPERATURE:-25°C TO +85°C
- NO.18 CONTACT IS LOWER PIN,SHOWN AS SECTION C-C.

Part No.

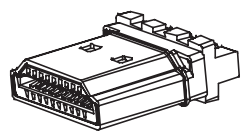
HI-19 M 01 K xx x
1 2 3 4 5 6

- Contact Positions: 19 Pins
- Contact Type:
M : Plug F: Socket
- Processing type
01: Direct Solder Pot
- Insulator Color:
K: Black
- Contact Plating:
01: Selective Flash Gold
15: 15u" Selective Gold
30: 30u" Selective Gold
- Shell Plating:
Blank: Nickel
G: Flash Gold
G2: 3u" Min. Gold
G3: 15u" Min. Gold



SECTION C-C
SCALE : 1 : 1

⑤	CONTACT 2	1	COPPER ALLOY	GOLD PLATED OVER NICKEL
④	CONTACT 1	18	COPPER ALLOY	GOLD PLATED OVER NICKEL
③	COVER	1	THERMOPLASTIC	UL94V-0
②	HOUSING	1	THERMOPLASTIC	UL94V-0
①	SHELL	1	COPPER ALLOY	GOLD, OR NICKEL PLATING
ITEM	PART NAME	Q'TY/EA	MATETIALS	NOTE



(The terms HDMI, HDMI High-Definition Multimedia Interface, HDMI Trade dress and the HDMI Logos are trademarks or registered trademarks of HDMI Licensing Administrator, Inc.)

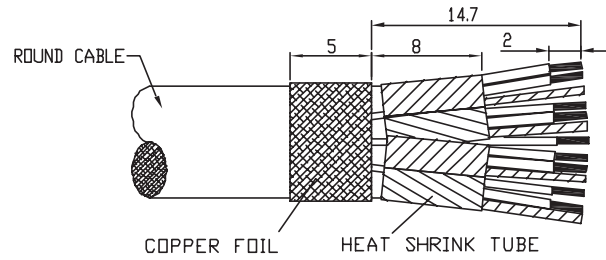
TOLERANCE UNSPECIFIED	
.000	±
.00	± 0.20
.0	± 0.25
.	± z
ANGLE	
	± z

PANSTRONG COMPANY LTD.		DRAWN BY		TOMMY
		CHECKED		
TITLE:		HDMI® MALE CONNECTOR (TYPE A)		APPROVED
PART NO:		HI-19M01Kxxx		DRAWING NO.
SCALE		/	REV	A
UNIT	mm			

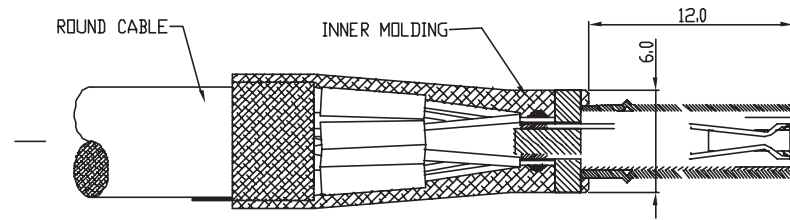
REV	DESCRIPTION	DATE
A	Initial Release	05'.12.05

APPLICATION GUIDE :

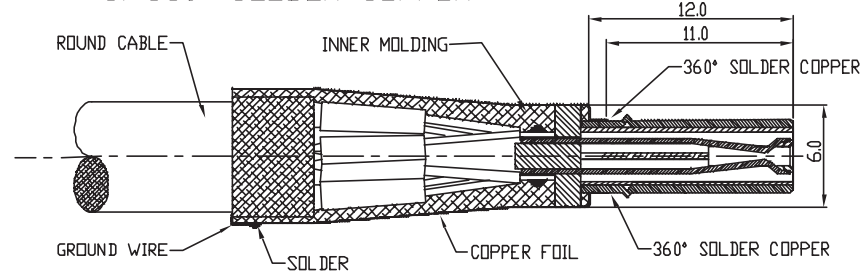
1. CABLE TREATMENT:



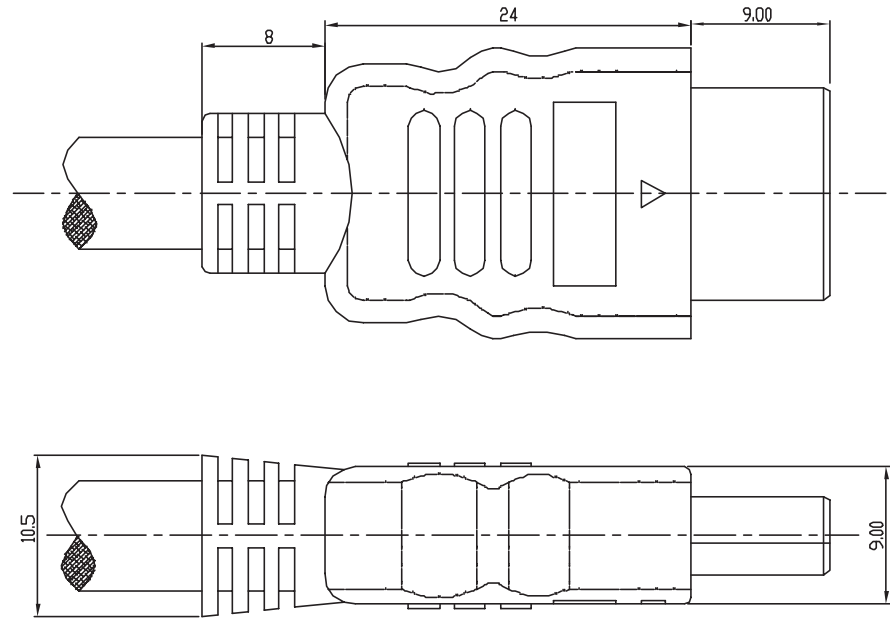
2. SOLDER AND INNER MOLDING



3. 360° SOLDER COPPER



4. OVER MOLDING



RoHS Compliant

(The terms HDMI, HDMI High-Definition Multimedia Interface, HDMI Trade dress and the HDMI Logos are trademarks or registered trademarks of HDMI Licensing Administrator, Inc.)

TOLERANCE	UNSPECIFIED
.0	±
.0	± 0.20
.0	± 0.25
·	± Z'
ANGLE	± Z'

PANSTRONG COMPANY LTD.		DRAWN BY	TOMMY
		CHECKED	
TITLE:	HDMI® MALE CONNECTOR (TYPE A)	APPROVED	
PART NO:	HI-19M01Kxxx	DRAWING NO.	R-S151S-1
SCALE	/	REV	A
UNIT	mm		