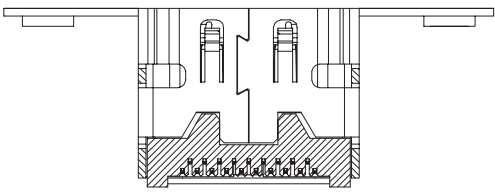
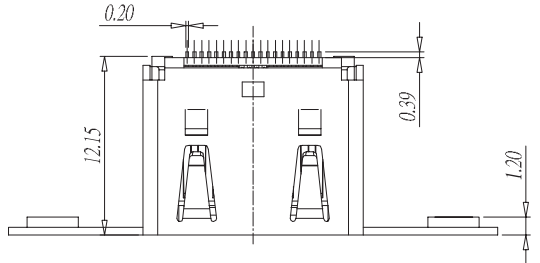
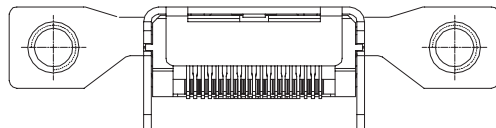
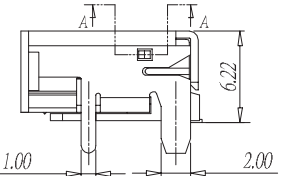
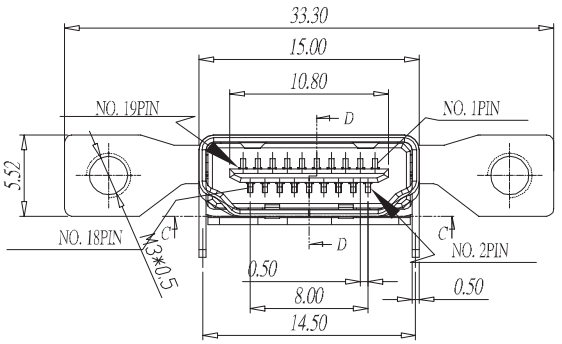


REV	DESCRIPTION	DATE
A	Initial Release	05.11.29



SEC C-C
SCALE 1:1

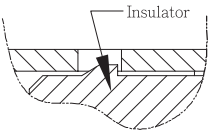
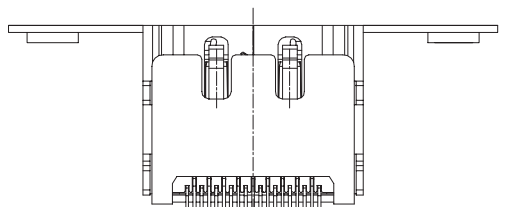
1. MATERIALS AND FINISH
 1.1 HOUSING & KEY:
 TEMP. PLASTIC, UL 94V-0 RATED.
 1.2 CONTACTS:
 COPPER ALLOY.
 GOLD ON CONTACT AREA,
 100u" MIN TIN-LEAD ON SOLDER TAILS.
 BOTH OVER 50u" MIN NICKEL ALL OVER.
 1.3 SHIELD:
 COPPER ALLOY.
 PLATING NICKEL 100u" MIN ALL OVER .
 2. DIMENSIONS SHALL BE INTERPRETED PER ANSI
 Y14.5M-1994.
 3. PRODUCT CODE:



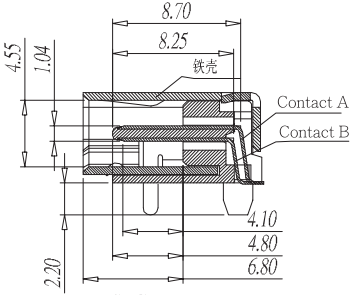
HDMI® WITH SCREW FLANGE A TYPE:

HIS2- 19 E 03 01 K 15 A
 1. 2. 3. 4. 5. 6.

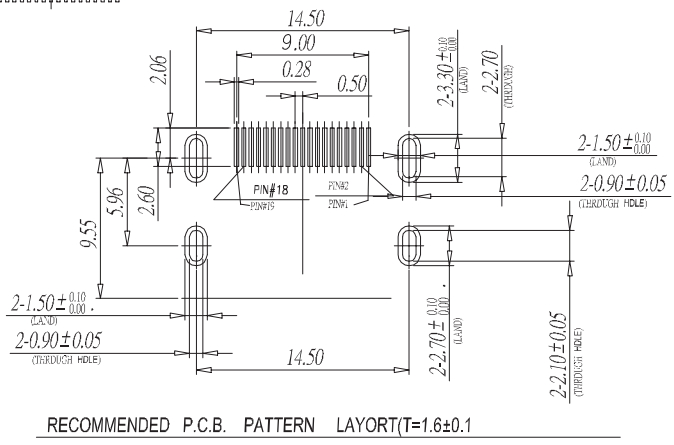
1. NUMBER OF CONTACT
19 : 19 POSITIONS
 2. CONNECTING TYPE
F : FEMALE (SOCKET)
 3. PROCESSING TYPE
03 : SMT
 4. CONNECTING DIRECTION
01 : RIGHT ANGLE
 5. INSULATOR COLOR
K : BLACK COLOR
 6. CONTACT PLANTING
15 : 15u" GOLD OVER NICKEL
- **Shell Type: With Top Spring and 4 x Through Hole



SEC A-A
SCALE 3:1



SEC D-D
SCALE 1:1



RECOMMENDED P.C.B. PATTERN LAYORT(T=1.6±0.1)

TOLERANCE UNSPECIFIED	
.x	±0.3
.xx	±0.20
.xxx	±0.100
ANG.	±1°

				DRAWN BY	TOMMY
				CHECKED	TOMMY
TITLE:		HDMI® P.C.B. SMT		APPROVED	CAROL
PART NO:		HIS2-19F0301K15A		DRAWING NO.	
SCALE	2:1	REV	A	UNIT	mm

(The terms HDMI, HDMI High-Definition Multimedia Interface, HDMI Trade dress and the HDMI Logos are trademarks or registered trademarks of HDMI Licensing Administrator, Inc.)