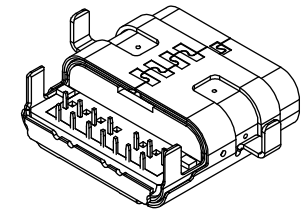
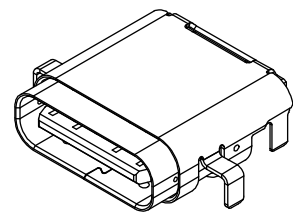
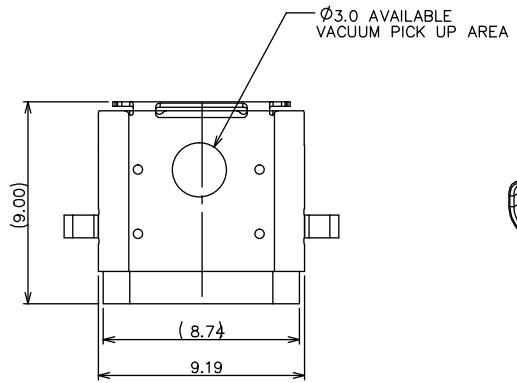


REV	DESCRIPTION	DATE
A	Initial Release	17.04.11



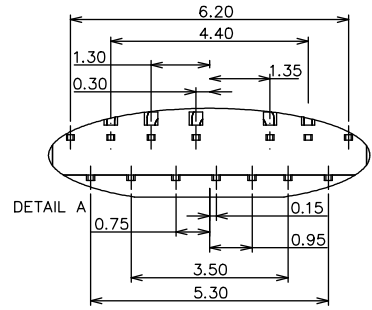
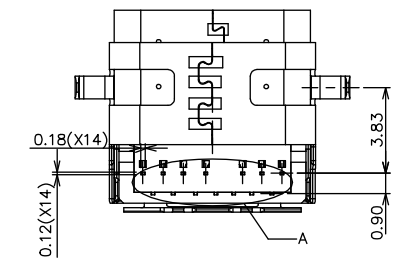
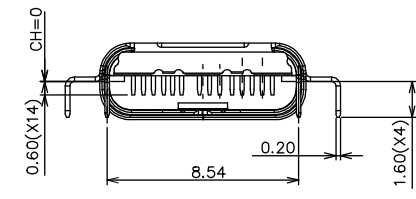
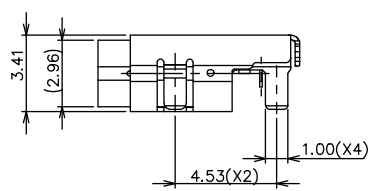
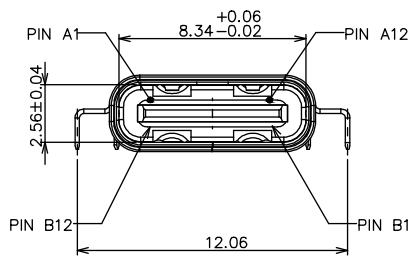
NOTES:

- 1.0. ELECTRICAL CHARACTERISTICS
- 1.1. LOW LEVEL CONTACT RESISTANCE:  
INITIAL: 40m ohm FOR ALL CONTACT MAX.  
AFTER : 10m ohm MAX. CHANGE.
- 1.2. DIELECTRIC WITHSTANDING VOLTAGE  
100 VAC FOR 1 MINUTE SEA LEVEL
- 1.3. INSULATION RESISTANCE  
100m ohm MIN
- 1.4. CURRENT RATING  
VBUS AND GND CONTACTS RATED AT 1.25A EA.  
PARALLELED FOR A TOTAL OF 5A
- 2.0. MECHANICAL CHARACTERISTICS:
- 2.1. INSERTION FORCE: 20N MAX
- 2.2. EXTRACTION FORCE 1-1000 CYCLES 8N MIN. 20 N MAX.  
EXTRACTION FORCE 1001-10000 CYCLES 6N MIN. 20 N MAX.
- 2.3. DURABILITY : 10,000 CYCLES
- 3.0 .OPERATING TEMPERATURE: -55° TO +85°

PART NUMBER CODE

UB20CR31LB-  $\frac{12}{1} \frac{F}{2} \frac{K}{3} \frac{xx}{4} \frac{x}{5} \frac{x}{6}$

1. Contact Positions:  
12: 12 pins
2. Contact Type:  
F: Female Receptacle
3. Insulator Color  
K: Black
4. Contact Plating:  
01: Selective G/F  
30: Selective 30u" Gold
5. Shell Plating:  
N: Solderable Nickel
6. Housing Material:  
LCP



5	OUTER SHELL	1	METAL/Ni PLATED
4	SHELL	1	METAL/Ni PLATED
3	GROUND PLATE	1	METAL/Ni PLATED
2	CONTACT	14	COPPER ALLOY / Au PLATED
1	HALF PRODUCT	1	HI - TEMP. G. F. UL94V-0
ITEM	NAME	Q'TY	MATERIAL/FINISH

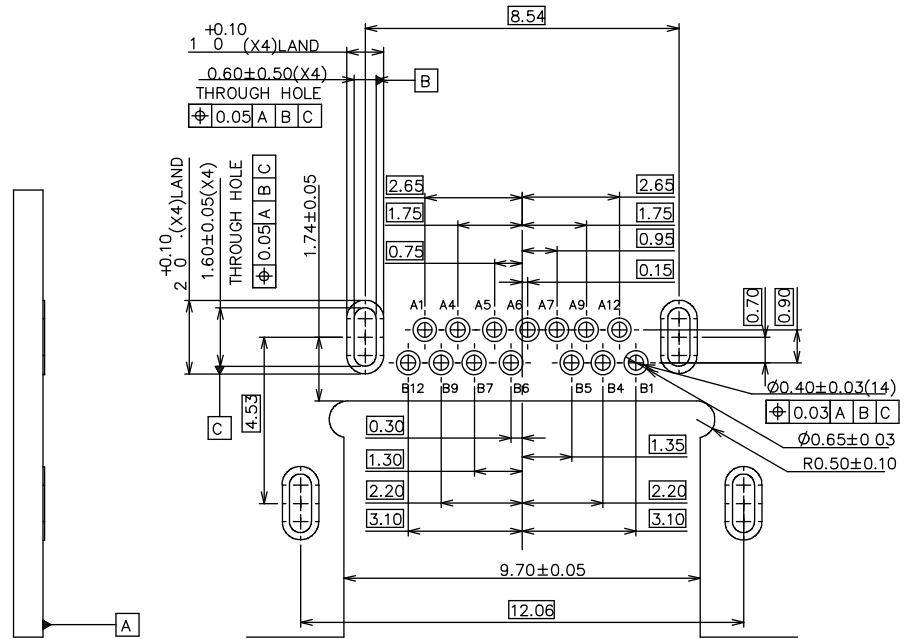
TABLE A:

PIN NO.	A1	A4	A5	A6	A7		A9	A12
SIGNAL NAME	GND	VBUS	CC1	Dp1	Dn1		VBUS	GND
PIN NO.	B12	B9		B7	B6	B5	B4	B1
SIGNAL NAME	GND	VBUS		Dn2	Dp2	CC2	VBUS	GND

TOLERANCES UNLESS OTHERWISE SPECIFIED	
GENERAL	±0.38
X	±0.25
XX	±0.13
XXX	±0.05
ANGLES	
X	±3.0°
XX	±1.5°
XXX	±1.0°


PANSTRONG COMPANY LTD.				DRAWN BY		TOMMY	
				CHECKED			
TITLE:		USB TYPE C CON				APPROVED	
		CH=0					
PART NO:		UB20CR31LB-12FKxxxx				DRAWING NO.	
SCALE		10:1		REV		A	
		UNIT		mm			

REV	DESCRIPTION	DATE
A	Initial Release	17.04.11



RECOMMENDED PCB LAYOUT  
THICKNESS IS 0.80mm  
TOLERANCE ±0.05

TOLERANCES UNLESS OTHERWISE SPECIFIED	
GENERAL	±0.38
.X	±0.25
.XX	±0.13
.XXX	±0.05
ANGLES	
.X°	±3.0°
.XX°	±1.5°

 <b>PANSTRONG COMPANY LTD.</b>				DRAWN BY		TOMMY	
				CHECKED			
TITLE:		USB TYPE C CON CH=0				APPROVED	
PART NO:		UB20CR31LB-12FKxxxx				DRAWING NO.	
SCALE		10:1	REV	A	UNIT	mm	