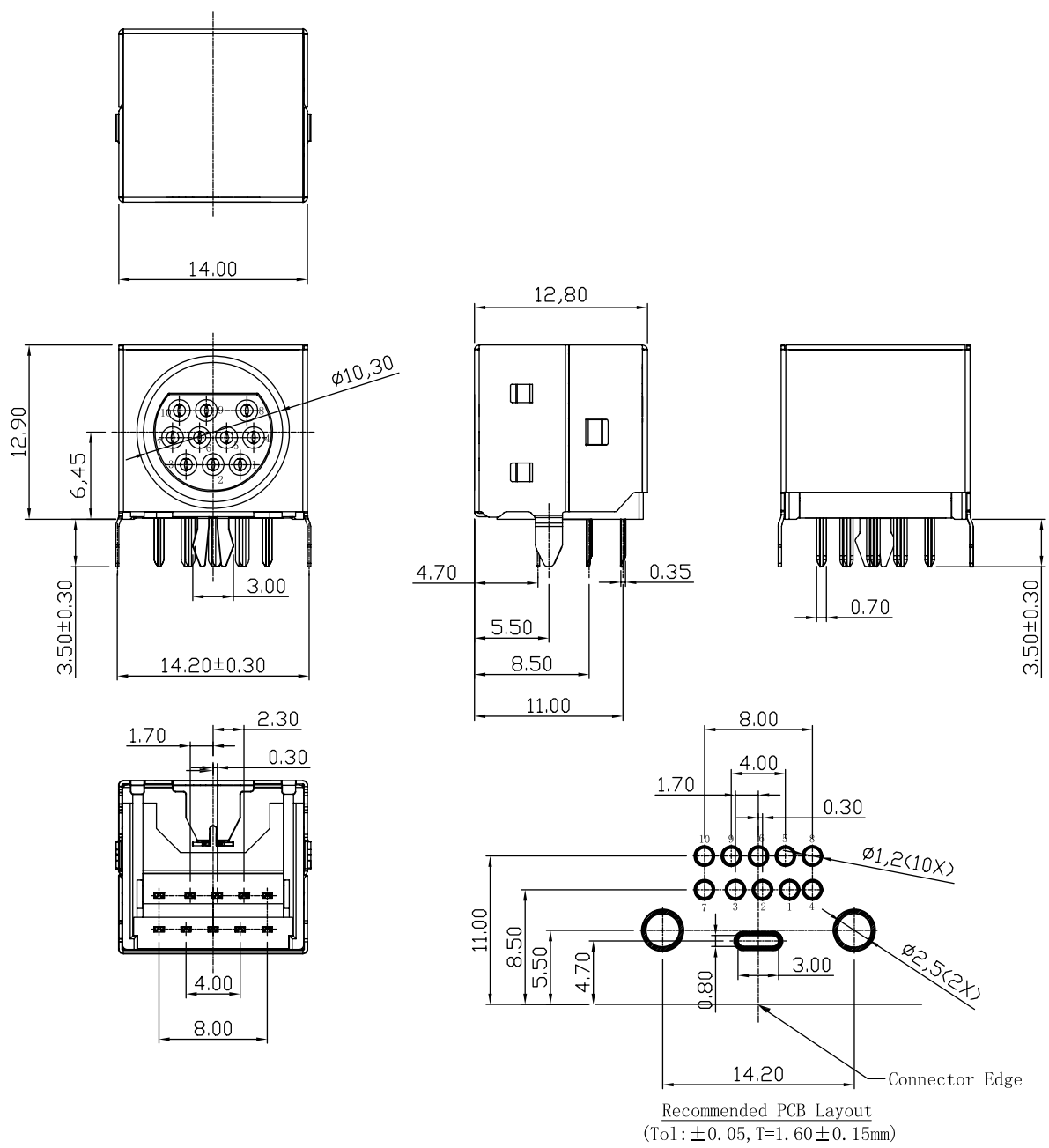


REV	DESCRIPTION	DATE
A	Initial Release	12.06.29



1. Material:

Contacts: PHOSPHOR BRONZE
 Insulator: PBT+30% G. F. UL 94V-0, Black
 Shell: Brass

2. Mechanical:

Mating: 70N max.
 Withdrawal Force: 30N min.
 Durability: 500 cycles min.

3. Electrical:

Current-max[amps]: 1.0A
 Voltage-max[volts]: 30V
 Withstanding Voltage: 750V AC
 Contact Resistance [ohms]: 30 milliohms max
 Insulation Resistance [ohms]: 1000 Megohms min

4. Plating:

Contacts: Gold 1u plated on contact area Tin plated on solder area, Nickel plated over all
 Shell: Nickel over all plating

5. Environmental

Temperature Range: -55° C ~ +85° C

				DRAWN BY		TOMMY			
				CHECKED					
TITLE:				MINI DIN 10P/F DIP					
PART NO:				MDS01R-10FK01-2					
SCALE				1:1		REV		A	
UNIT		mm		APPROVED		DRAWING NO.		184-1022NA0201	

TOLERANCES UNLESS OTHERWISE SPECIFIED			
X.X	±0.38	X.X'	±3.00'
X.XX	±0.25	X.XX'	±1.00'
X.XXX	±0.13	X.XXX'	±0.500'