

| REV | DESCRIPTION | DATE |
|-----|-----------------|----------|
| A | Initial Release | 19.04.04 |

SPECIFICATION:

1.ELECTRICAL CHARACTERISTICS:

- 1.1 CURRENT RATING: 1.5A/Pin MAX(A4,A9,B4,B9)
1.25A/Pin MAX(A1,A12,B1,B12),0.25A(OHER PIN)
- 1.2 CONTACT RESISTANCE: 40 MILLIONHM MAX.
- 1.3 DIELECTRIC WITHSTANDING VOLTAGE: 100 VAC r.m.s
- 1.4 INSULATION RESISTNACE: 100 MEGOHMS MIN.

2.MECHANICAL CHARACTERISTICS

- 2.1 INSERTION FORCE: 5~20N
- 2.2 EXTRACTION FORCE: Initial:8~20N;Durability:6~20N(1000cycles);
- 2.3 DURABILITY:10,000CYCLES

3.ENVIRONMENTAL CHARACTERISTICS

- 3.1 TEMPERATURE RANGE: -40 °C ~ 85 °C
- 3.2. IR REFLOW:
THE PEAK TEMPERATURE ON THE BOARD SHALL
BE MAINTAINED FOR 10 SECONDS AT 260°C.

NOTE:

- MATERIAL:

- 1.SHELL: STAINLESS STELL
- 2.HOUSING/CAP: HI-TEMP THERMOPLASTIC UL 94V-0 BLACK
- 3.CONTACT A: COPPER ALLOY
- 4.CONTACT B: COPPER ALLOY
- 5.MID PLATE: STAINLESS STELL

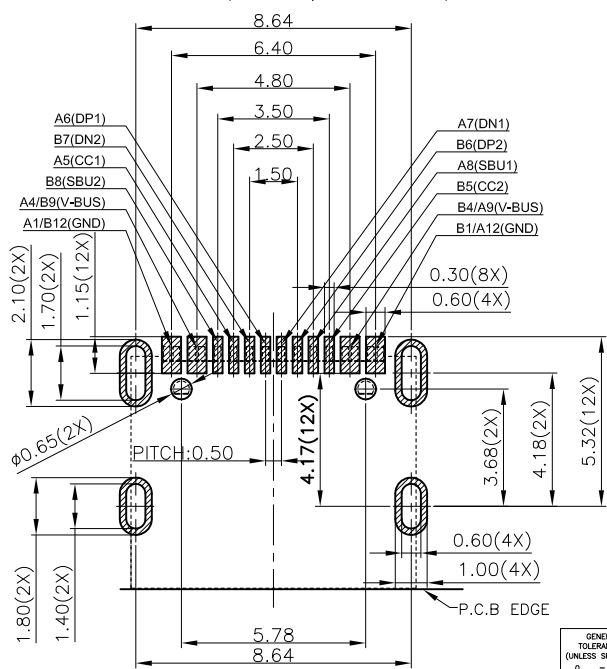
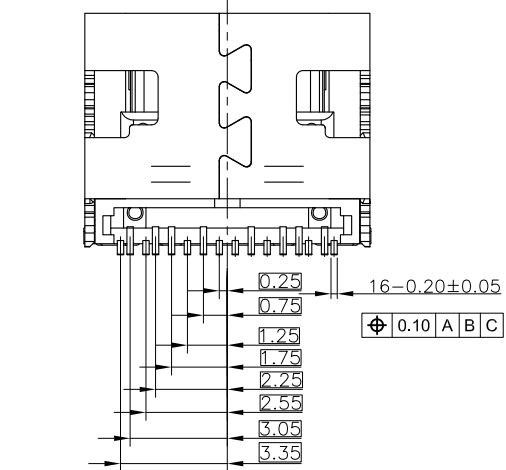
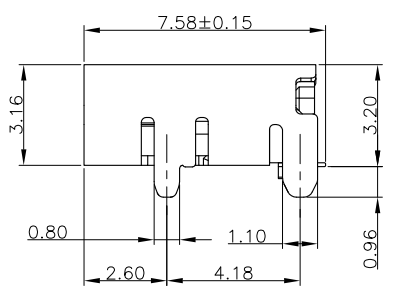
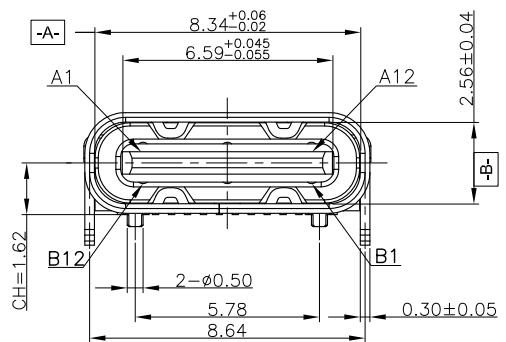
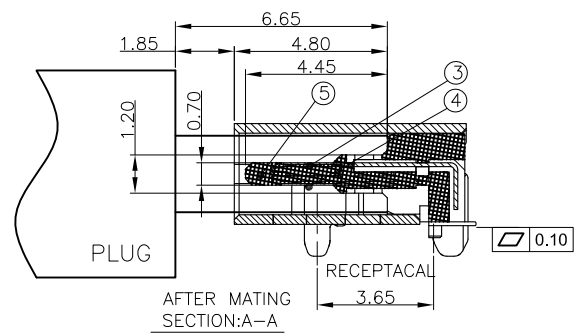
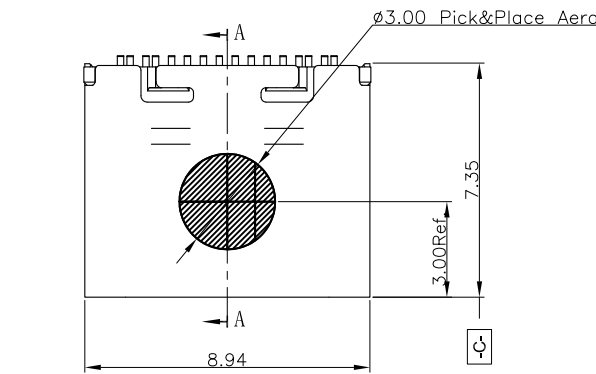
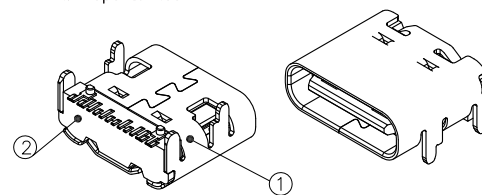
= DATE CODE: YYWWD

- YY=YEAR OF MANUFACTURE
- WW=WEEK OF MANUFACTURE
- D=DAY FOR WEEK

PART NO.

UB20CR03-12 F K xx x x
1 2 3 4 5 6

- 1. Contact Positions:
12: 12 Pins
- 2. Contact Type:
F : Female Receptacle
- 3. Insulator Color
K : Black
- 4. Contact Plating
03: 3u" Gold Front Contacts and G/F Solder Tails
30: 30u" Gold Front Contacts and G/F Solder Tails
- 5. Shell Plating:
N: Nickel
- 6. Package :
R: Tape & Reel



RECOMMENDED PCB LAYOUT(THICKNESS:0.80MM)
PWB TOLERANCE: ±0.05

| GENERAL TOLERANCES (UNLESS SPECIFIED) |
|---------------------------------------|
| 0 = ±0.30 |
| 0.3 = ±0.20 |
| 0.00 = ±0.10 |
| 0.000 = ±0.05 |
| ∅ = ±0.11 |
| 0.0° = ±0.50° |

| | | | | | |
|------------------------|-----|--|---|-------------|----|
| PANSTRONG COMPANY LTD. | | DRAWN BY | | TOMMY | |
| | | CHECKED | | | |
| TITLE: | | USB C Type 12 PIN, L=7.35MM RECEPTACLE, SMT, R/A | | APPROVED | |
| PART NO: | | UB20CR03-12FKxx x x | | DRAWING NO. | |
| SCALE | 1:1 | REV | A | UNIT | mm |
| | | | | | |