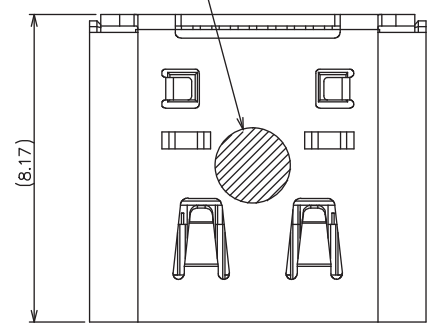


REV	DESCRIPTION	DATE
A	Initial Release	17:11.26

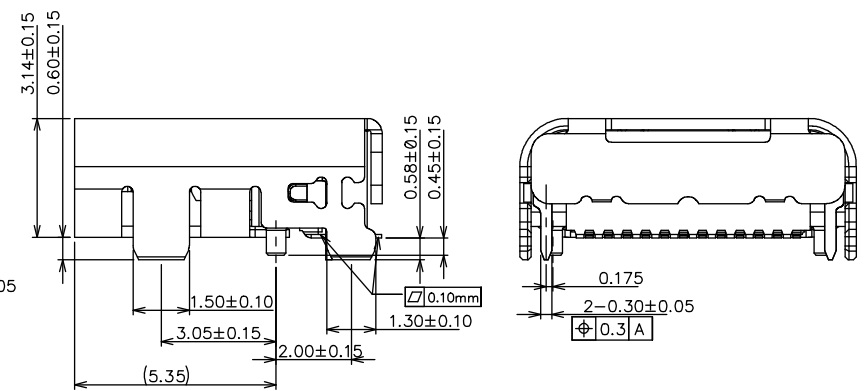
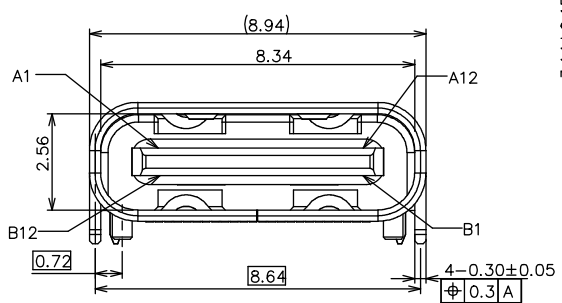
Ø2.00mm PICK UP AREA



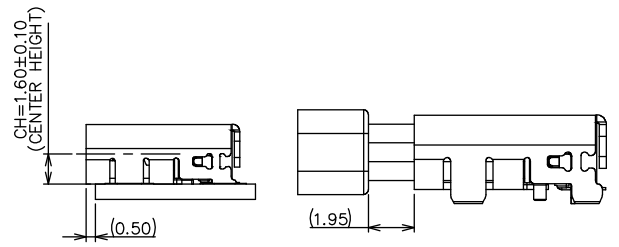
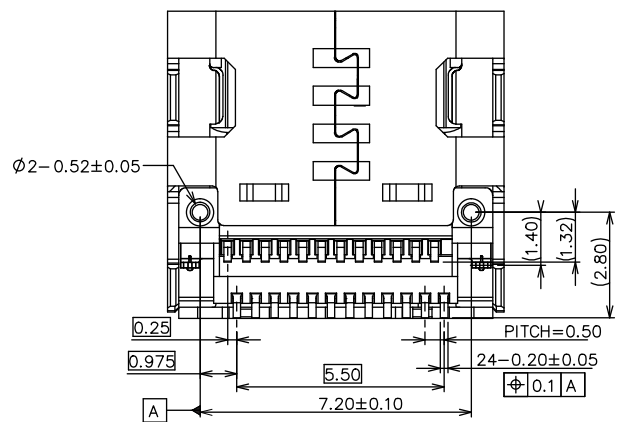
- NOTES :
- ELECTRICAL CHARACTERISTIC :
    - LOW LEVEL CONTACT RESISTANCE:  
INITIAL: 40 mΩ FOR ALL CONTACT MAXIMUM.  
AFTER TEST: 50mΩ MAXIMUM
    - DIELECTRIC WITHSTANDING VOLTAGE :  
100 VAC FOR ONE MINUTE SEA LEVEL.
    - INSULATION RESISTANCE :  
100 MΩ MINIMUM.
    - CURRENT RATING :  
VBUS AND GND CONTACTS RATED AT 1.25A EA.  
PARALLELED FOR A TOTAL OF 5A.
  - MECHANICAL CHARACTERISTIC :
    - INSERTION FORCE: 1~10,000CYCLES 5N~20N
    - EXTRACTION FORCE:  
INITIAL EXTRACTION FORCE 6TH CYCLES OF 8N ~ 20 N  
(1~5 INSERTION EXTRACTION PRECONDITIONING CYCLES)  
DURABILITY 32TH EXTRACTION FORCE SHALL BE 33% OF THE INITIAL  
READING AND WITHIN THE RANGE 8 N ~ 20 N.  
(6 CYCLES ADDITIONAL 25 INSERTION EXTRACTION CYCLES )  
AFTER DURABILITY 10,000 CYCLES OF 6N ~ 20N
    - DURABILITY : 10,000 CYCLES.
  - OPERATING TEMPERATURE: -55°C TO +85°C

PART NUMBER CODE  
UBT30CR33- 24 F K xx x -2  
1 2 3 4 5

- Contact Positions:  
24: 24 pins
- Contact Type:  
F: Female Receptacle
- Insulator Color:  
K: Black
- Contact Plating:  
01: Selective G/F  
30: Selective 30u" Gold
- Shell Plating:  
N: Solderable Nickel



4	SHELL	1	METAL / SOLDERINGNI PLATED
3	GROUND PLATE	1	METAL / SOLDERINGNI PLATED
2	CONTACT	24	COPPER ALLOY/Au PLATED
1	HOUSING	1	LCP G.F . UL94V-0
ITEM	NAME	Q'TY	MATERIAL / FINISH

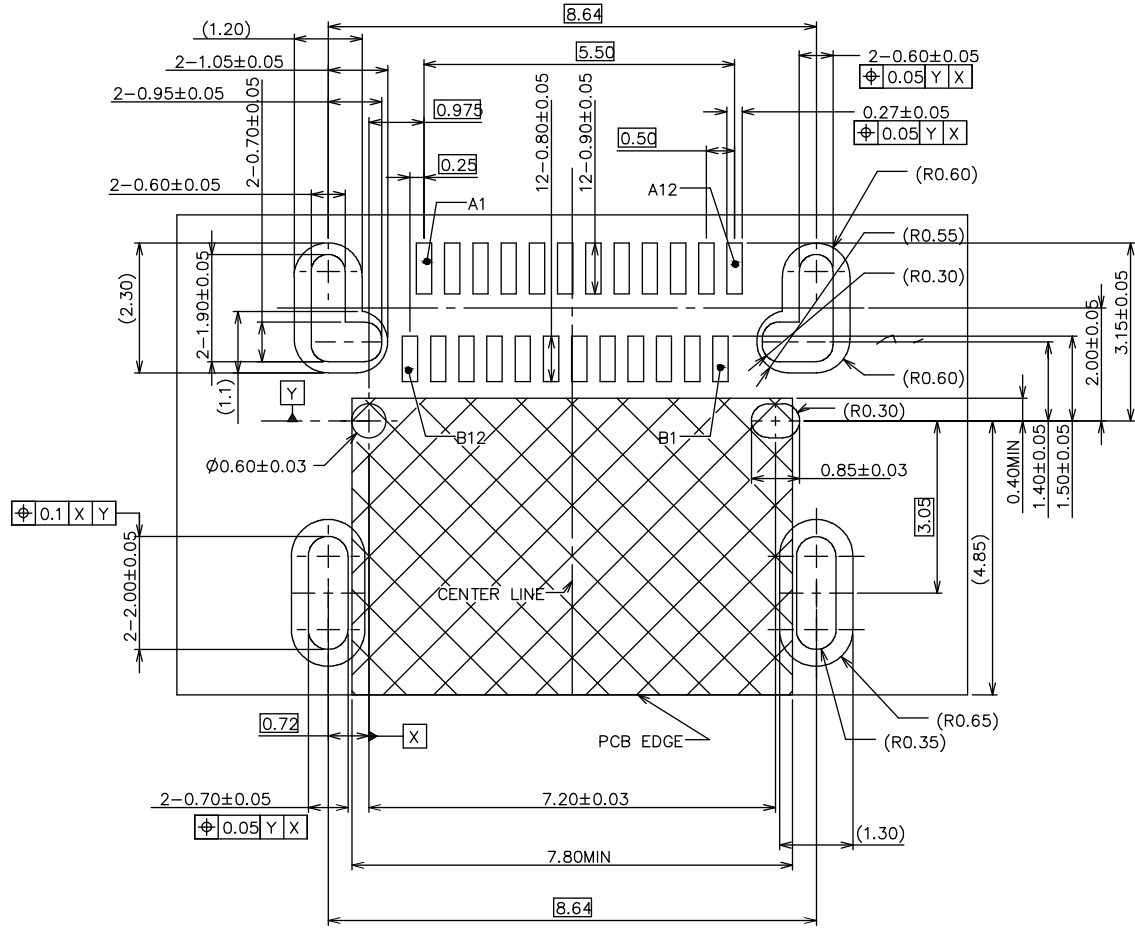


PIN NO.	A1	A2	A3	A4	A5	A6	A7	A8	A9	A10	A11	A12
SIGNAL NAME	GND	SSTXp1	SSTXn1	VBUS	CC1	Dp1	Dn1	SBU1	VBUS	SSRXn2	SSRXp2	GND
PIN NO.	B12	B11	B10	B9	B8	B7	B6	B5	B4	B3	B2	B1
SIGNAL NAME	GND	SSRXp1	SSRXn1	VBUS	SBU2	Dn2	Dp2	CC2	VBUS	SSTXn2	SSTXp2	GND

TOLERANCES UNLESS OTHERWISE SPECIFIED  
GENERAL: X .0.25  
.X .0.25  
.XX .0.13  
.XXX .0.05  
.XXXX .0.02  
ANGLES: X .°  
.X .2.0°  
.XX .1.0°

		DRAWN BY		TOMMY	
		CHECKED			
TITLE:		USB TYPE-C (TBT3) CONN RECEPTACLE TOP MOUNT CH=1.6			
PART NO:		UBT30CR33-24FKxxx-2			
SCALE	5:1	REV	A	UNIT	mm

REV	DESCRIPTION	DATE
A	Initial Release	17:11.26



RECOMMENDED PCB LAYOUT  
THICKNESS IS 1.0mm  
TOLERANCE 0.05mm

TOLERANCES UNLESS OTHERWISE SPECIFIED	
GENERAL	.X ±0.25
	.XX ±0.13
	.XXX ±0.05
ANGLES	.X ±2.0°
	.XX ±1.0°

<b>PANSTRONG COMPANY LTD.</b>		DRAWN BY		TOMMY	
		CHECKED			
TITLE:		USB TYPE-C (TBT3) CONN RECEPTACLE TOP MOUNT CH=1.6			
PART NO:		UBT30CR33-24FKxxx-2			
SCALE		5:1	REV	A	
UNIT	mm	APPROVED		DRAWING NO.	