

REV	DESCRIPTION	DATE
A	Initial Release	16.12.12

NOTES:

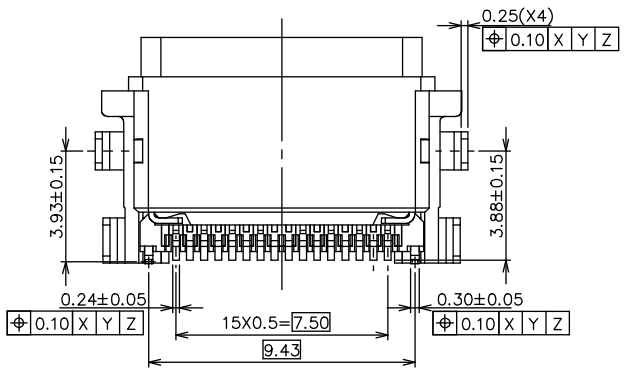
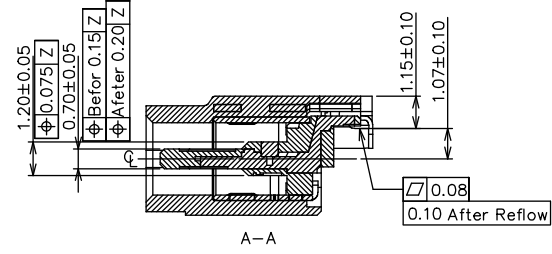
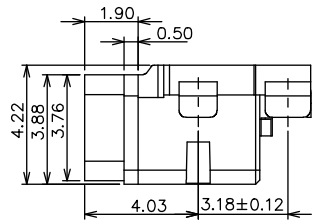
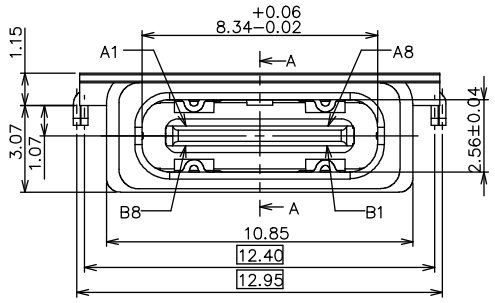
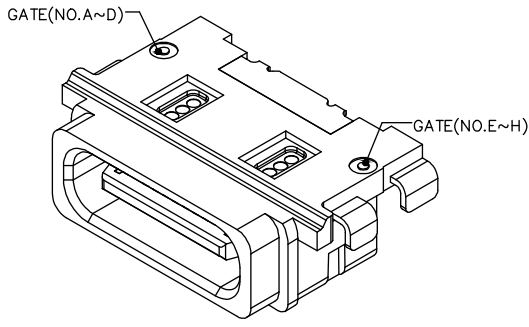
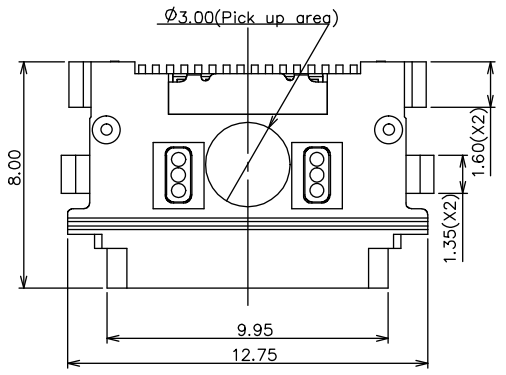
- 1.0 ELECTRICAL CHARACTERISTICS:
- 1.1 LOW LEVEL CONTACT RESISTANCE:
INITIAL: 40mOhm FOR ALL CONTACT MAX.
AFTER: 50mOhm MAX.
- 1.2 DIELECTRIC WITHSTANDING VOLTAGE:
100 VAC OR 1 MINUTE SEE LEVEL
- 1.3 INSULATION RESISTANCE:
100MOhm MIN.
- 1.4 CURRENT RATING:
VBUS AND GND CONTACTS RATED AT 1.5A.
PARALLELED OR A TOTAL OF 3A
- 2.0 MECHANICAL CHARACTERISTICS:
- 2.1 INSERTION FORCE: 5N MIN. 20N MAX.
- 2.2 EXTRACTION FORCE:
DURABILITY 1~1,000 CYCLES 8N MIN. 20N MAX.
DURABILITY 1,001~10,000 CYCLES 6N MIN. 20N MAX.
- 2.3 DURABILITY: 10,000 CYCLES
- 3.0 OPERATING TEMPERATURE: -40°C TO +80°C

PART NUMBER CODE

UB20CR03- PSP7- 16 F K xx x x x

1. Contact Positions:
16: 16 pins
2. Contact Type:
F: Female Receptacle
3. Insulator Color:
K: Black
4. Contact Plating:
01: Selective G/F
30: 30u" Selective Gold
3G: 30u" Gold Front Contact, G/F Solder Tails
5. Shell Plating:
N: Solderable Nickel
6. Housing Material:
5: PA46
7. Packing :
R: Tape & Reel

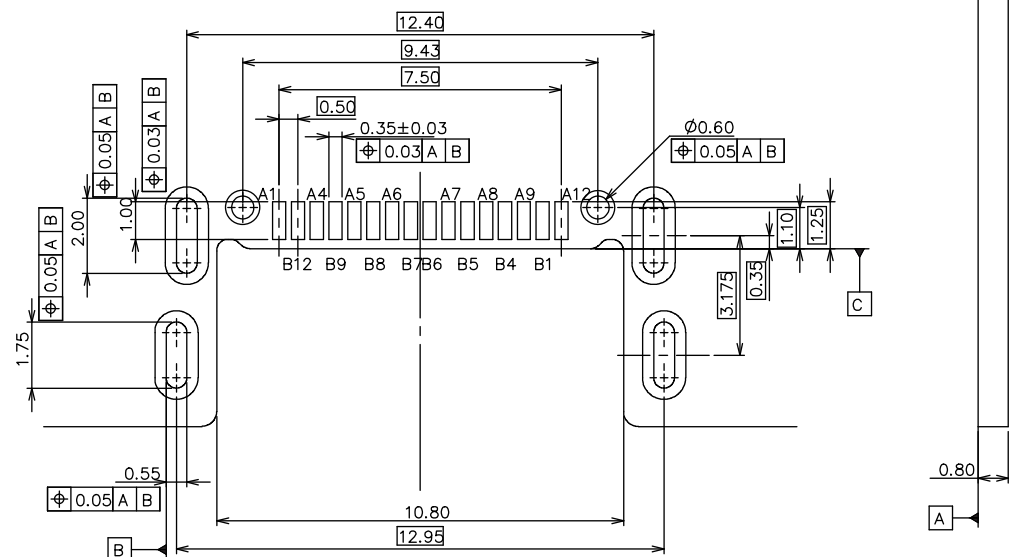
ITEM	NAME	Q'TY	MATERIAL / FINISH
6	PLASTIC SHELL	1	HIGH-TEMPERATURE PLASTIC ,UL94-V0
5	OUTTER SHELL	1	STAINLESS STEEL/NI PLATED
4	SHELL	1	STAINLESS STEEL/NI PLATED
3	GROUND PLATED	2	STAINLESS STEEL/NI PLATED
2	CONTACT	16	COPPER ALLOY/SEE TABLE A
1	HOUSING	1	HIGH-TEMPERATURE PLASTIC, UL94-V0



TOLERANCES UNLESS OTHERWISE SPECIFIED
GENERAL: .X .0.38
.X .0.25
.XX .0.13
.XXX .0.09
ANGLES: .X .3.0°
.X .2.0°
.XX .1.0°

		DRAWN BY		TOMMY
		CHECKED		
TITLE:		USB 2.0 Type-C 16Pin Receptacle Mid Mount CH=1.07, IPX7, Plastic Shell, SMT Type		
PART NO:		UB20CR03-PSP7-16FKxxxxx		
SCALE		6:1	REV	A
UNIT		mm		

REV	DESCRIPTION	DATE
A	Initial Release	16.12.12



RECOMMENDED PCB LAYOUT
TOLERANCE ±0.05

PIN NO.	A1	A4	A5	A6	A7	A8	A9	A12
SIGNAL NAME	GND	VBUS	CC1	Dp1	Dn1	SBU1	VBUS	GND
PIN NO.	B12	B9	B8	B7	B6	B5	B4	B1
SIGNAL NAME	GND	VBUS	SBU2	Dn2	Dp2	CC2	VBUS	GND

TOLERANCES UNLESS OTHERWISE SPECIFIED
GENERAL: .X .0.38
.X .0.25
.XX .0.13
.XXX .0.09
ANGLES: .X .2.0°
.XX .1.0°

PANSTRONG COMPANY LTD.				DRAWN BY		TOMMY	
				CHECKED			
TITLE:		USB 2.0 Type-C 16Pin Receptacle Mid Mount CH=1.07, IPX7, Plastic Shell, SMT Type				APPROVED	
PART NO:		UB20CR03-PSP7-16FKxxxxx				DRAWING NO.	
SCALE		6:1	REV	A	UNIT	mm	