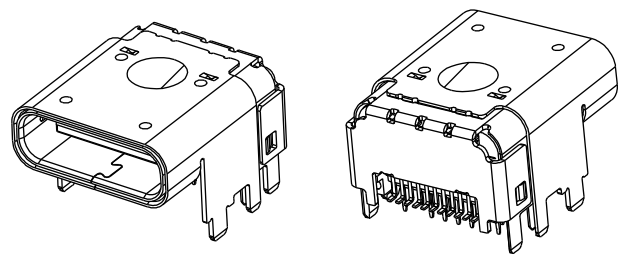
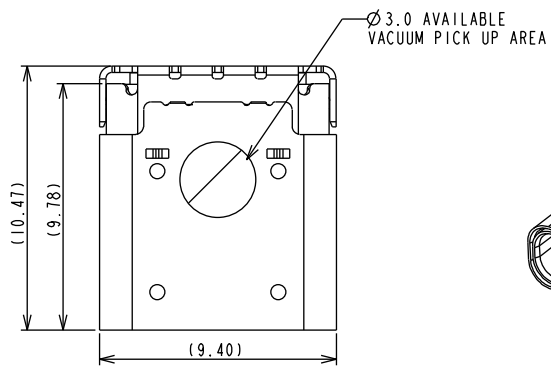


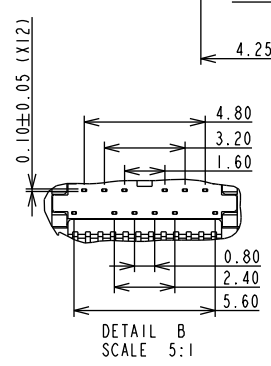
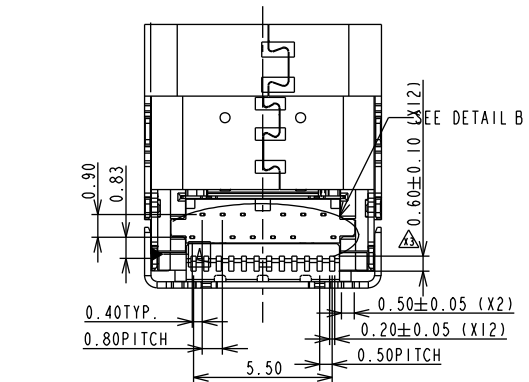
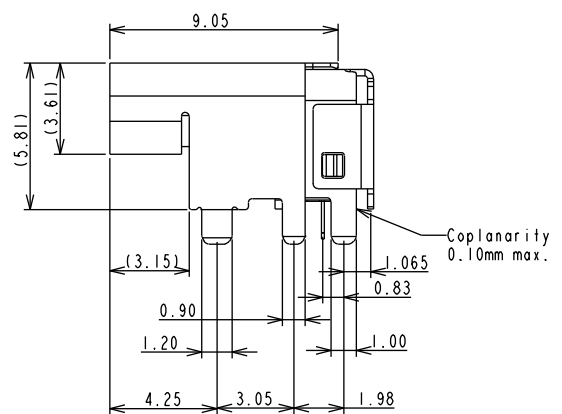
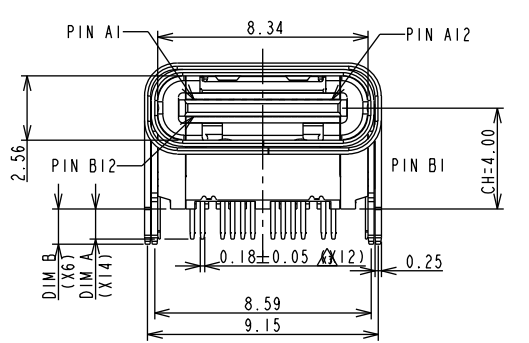
REV	DESCRIPTION	DATE
A	Initial Release	15.03.25



- NOTES:
- ELECTRICAL CHARACTERISTICS:
 - LOW LEVEL CONTACT RESISTANCE:
INITIAL: 40mΩ FOR ALL CONTACT MAX.
AFTER : 50mΩ FOR ALL CONTACT MAX.
 - DIELECTRIC WITHSTANDING VOLTAGE:
100 VAC FOR 1 MINUTE SEA LEVEL.
 - INSULATION RESISTANCE:
100MΩ MIN.
 - CURRENT RATING:
VBUS AND GND CONTACTS RATED AT 1.25A EA.,
PARALLELED FOR A TOTAL OF 5A.
 - MECHANICAL CHARACTERISTICS:
 - INSERTION FORCE: 5 ~ 20N MAX
 - EXTRACTION FORCE:
DURABILITY 1-1000 CYCLES 8N MIN. 20 N MAX.
DURABILITY 1001-10000 CYCLES 6N MIN. 20 N MAX.
 - DURABILITY : 10,000 CYCLES
 - OPERATING TEMPERATURE: -55°C TO +85°

PART NO.
UB20CR31-H40-24 F K xx x x
1 2 3 4 5 6

- Contact Positions:
24: 24 pins
- Contact Type:
F: Female Receptacle
- Insulator Color:
K: Black
- Contact Plating:
01: Selective G/F
30: Selective 30u" Gold
- Shell Plating:
N: Solderable Nickel
- Other & Package:
0: Shell Hold Down 1.4mm & Contact 1.2mm
1: Shell Hold Down 1.8mm & Contact 1.6mm
2: Shell Hold Down 1.4mm & Contact 1.4mm



PART NUMBER	DIM A	DIM B
UB20CR31-H40-24FKxxN0	1.20	1.40
UB20CR31-H40-24FKxxN1	1.60	1.80
UB20CR31-H40-24FKxxN2	1.40	1.40

6	EMI RING	2	METAL / Ni PLATED
5	GROUND PLATE	1	METAL / Ni PLATED
4	OUTER SHELL	1	METAL / Ni PLATED
3	SHELL	1	METAL / Ni PLATED
2	CONTACT	24	COPPER ALLOY / Au PLATED
1	HALF PRODUCT	3	HI-TEMP G.F., UL94V-0
ITEM	NAME	Q'TY	MATERIAL / FINISH

TABLE A:

PIN NO.	A1	A2	A3	A4	A5	A6	A7	A8	A9	A10	A11	A12
SIGNAL NAME	GND	SSTXp1	SSTXn1	VBUS	CC1	Dp1	Dn1	SUB1	VBUS	SSRXn2	SSRXp2	GND
PIN NO.	B2	B11	B10	B9	B8	B7	B6	B5	B4	B3	B2	B1
SIGNAL NAME	GND	SSRXp1	SSRXn1	VBUS	SBU2	Dn2	Dp2	CC2	VBUS	SSTXn2	SSTXp2	GND

TOLERANCES UNLESS OTHERWISE SPECIFIED
GENERAL X ±0.38
Y ±0.25
XX ±0.13
XXX ±0.05
ANGLES X° ±3.0°
Y° ±1.5°

	PANSTRONG COMPANY LTD.		DRAWN BY	TOMMY
			CHECKED	
TITLE:	USB TYPE-C FULL FEATURE CONN. RECEPTALE-TOP MOUNT TYPE		APPROVED	
PART NO:	UB20CR31-H40-24FKxxxx		DRAWING NO.	
SCALE	4:1	REV	A	UNIT mm

