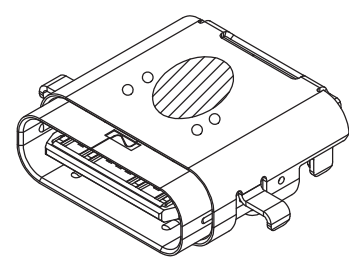
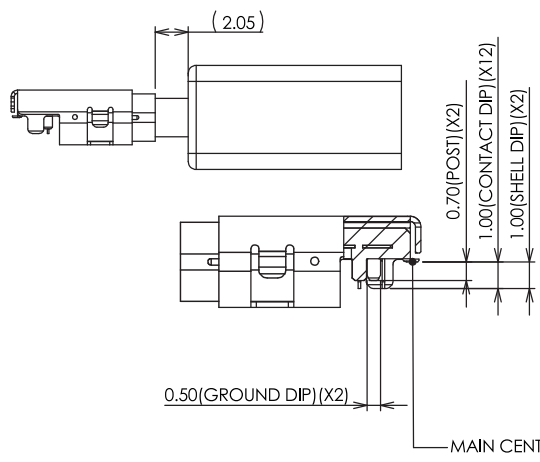
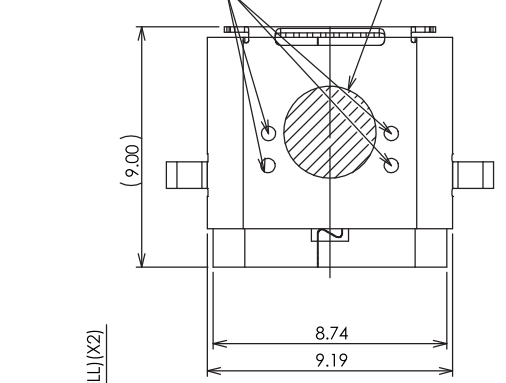
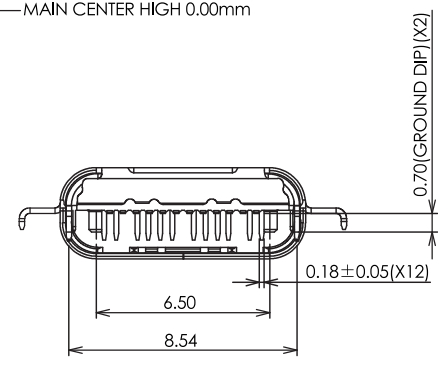
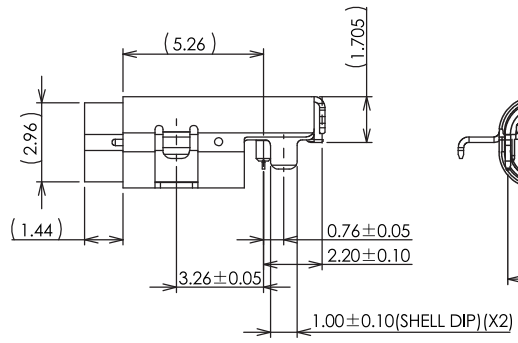
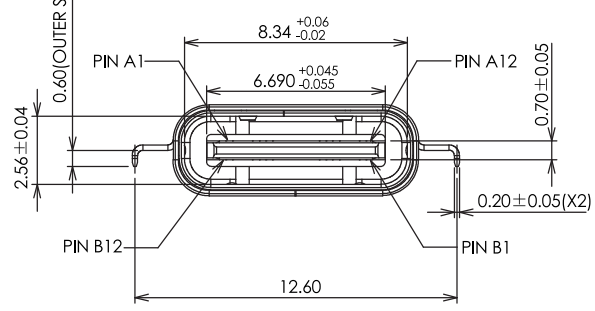


REV	DESCRIPTION	DATE
A	Initial Release	15.10.05

LASER WELDING SPOT
 Ø 3.0 AVAILABLE VACUUM PICK UP AREA



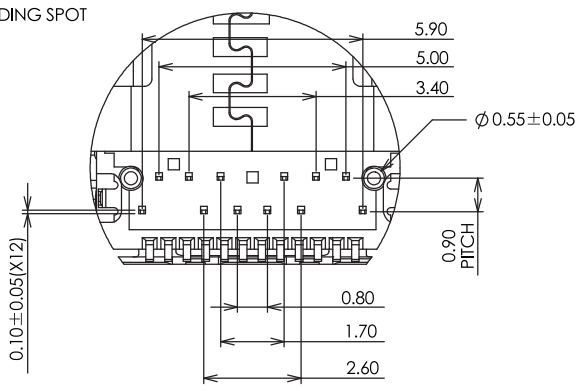
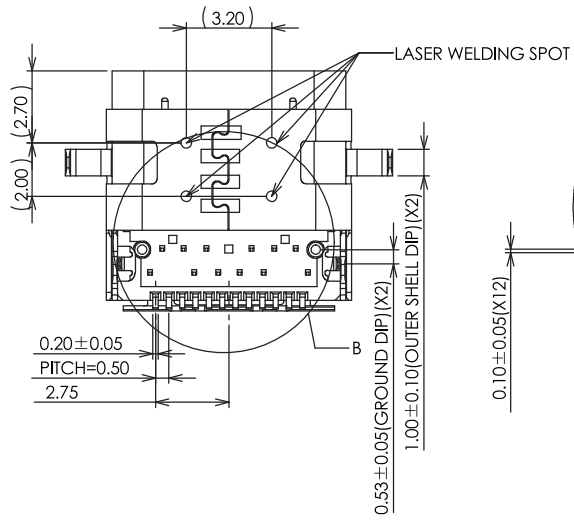
- Notes:
- 1.0 Electrical Characteristics:
 - 1.1 Low Level Contact Resistance:
 - Initial: 40mΩ for All Contact Maximum.
 - After: 50mΩ Maximum.
 - 1.2 Dielectric Withstanding Voltage:
 - 100 VAC for 1 Minute Sea Level.
 - 1.3 Insulation Resistance:
 - 100MΩ Minimum.
 - 1.4 Current Rating:
 - VBUS and GND Contacts Rated at 1.25A EA.
 - Paralleled for A Total of 5A
 - 2.0 Mechanical Characteristics:
 - 2.1 Insertion Force: 1~10000 Cycles 5N~20N.
 - 2.2 Extraction Force:
 - Initial Extraction Force 6TH Cycles of 8N-20N (1~5 Insertion/Extraction Preconditioning Cycles), Durability 32TH Extraction Force Shall be 33% of the Initial Reading and Within the Range 8N~20(6 Cycles Additional 25 Insertion/Extraction Cycles). After Durability 10,000 Cycles of 6N~20N.
 - 2.3 Durability: 10,000 Cycles
 - 2.4 Operating Temperature: -55°C to +85°C



PART NUMBER CODE
 UBT30CR31LB - 24 F Kxx.xx
 1 2 3 4 5 6

1. Contact Positions: 24: 24 pins
2. Contact Type: F: Female Receptacle
3. Insulator Color: K: Black
4. Contact Plating: 01: Selective G/F, 30: Selective 30u" Gold
5. Shell Plating: N: Solderable Nickel
6. Housing : LCP

5	OUTER SHELL	1	METAL/Ni PLATED
4	SHELL	1	METAL/Ni PLATED
3	GROUND PLATE	1	METAL/Ni PLATED
2	CONTACT	24	COPPER ALLOY/Au PLATED
1	HALF PRODUCT	1	HI-TEMP. G.F. UL94V-0
ITEM	NAME	QTY	MATERIAL/FINISH



PIN NO.	A1	A2	A3	A4	A5	A6	A7	A8	A9	A10	A11	A12
SIGNAL NAME	GND	SSTxp1	SSTxn1	VBUS	CC1	Dp1	Dn1	SBU1	VBUS	SSRxn2	SSRxp2	GND
PIN NO.	B12	B11	B10	B9	B8	B7	B5	B4	B3	B2	B1	
SIGNAL NAME	GND	SSRxp1	SSRxn1	VBUS	SBU2	Dn2	Dn2	CC2	VBUS	SSTxn2	SSTxp2	GND

PANSTRONG COMPANY LTD.

TITLE: USB TYPE-C 3.1(10Gps) CONN. RECEPTACLE-MID MOUNT TYPE CH=0mm
 PART NO: UBT30CR31LB-24FKxxxx
 SCALE: 5:1 REV: A

DRAWN BY: TOMMY
 CHECKED:
 APPROVED:
 DRAWING NO.:
 UNIT: mm

TOLERANCES UNLESS OTHERWISE SPECIFIED	
GENERAL X	±0.38
.1	±0.25
.12	±0.13
.15X	±0.05
ANGLES	±.2°
.1°	±.1°
.15°	±.1°

