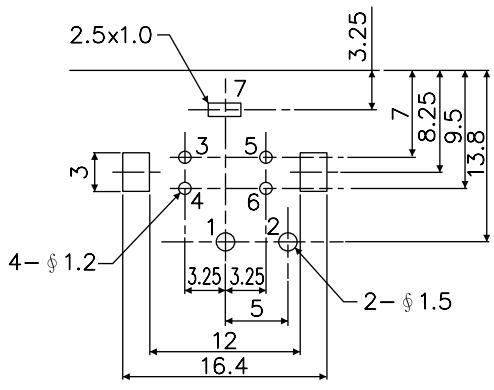
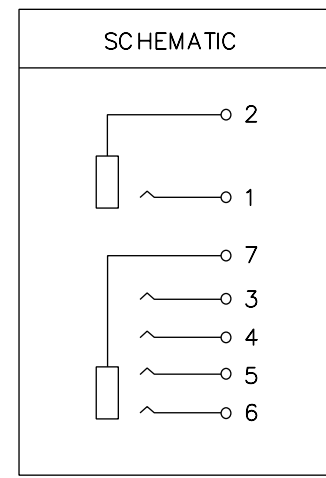
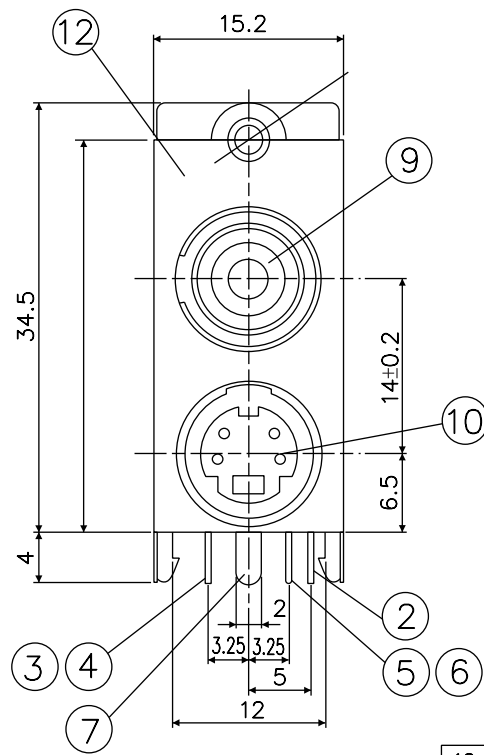
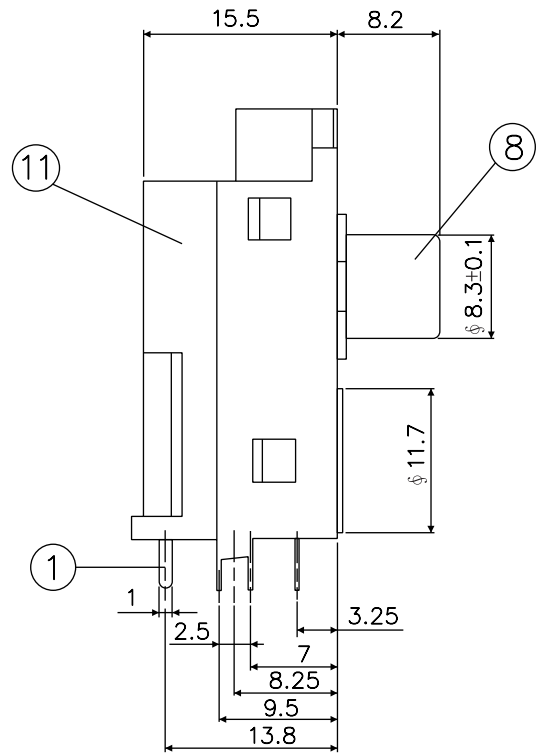


REV	DESCRIPTION	DATE
A	Initial Release	05.11.17



T:1.6 Dimensions of PC board holes
Tolerance: ± 0.1 (Printed-bottom view)

12	SEALED PLATE	1	SPCC t=0.3	MB:Cu Cu/Sn PLATED
11	HOUSING(PIN JACK)	1	ABS	UL-94HB
10	HOUSING(PIN JACK)	1	ABS	UL-94HB
9	WASHER	1	ABS	UL-94HB
8	OUTER CONTACT	1	C2680 t=0.4	MB:Cu Cu/Sn PLATED
7	GROUND CONTACT	1	C5191 t=0.3	MB:Cu Cu/Sn PLATED
6	TERMINAL	1	C5210 t=0.4	MB:Cu Ag PLATED
5	TERMINAL	1	C5210 t=0.4	MB:Cu Ag PLATED
4	TERMINAL	1	C5210 t=0.4	MB:Cu Ag PLATED
3	TERMINAL	1	C2510 t=0.4	MB:Cu Ag PLATED
2	EARTH FITTING	1	C2680 t=0.4	MB:Cu Cu/Sn PLATED
1	CENTER CONTACT	1	C2680 t=0.4	MB:Cu Cu/Sn PLATED



PANSTRONG COMPANY LTD.

DRAWN BY TOMMY

CHECKED

TITLE: PIN JACK + S JACK

APPROVED

PART NO: RJS1YOMD4F

DRAW NO

File Number:

SCALE / REV A

UNIT mm

UNLESS OTHERWISE SPECIFIED,
TOLERANCE ON DECIMAL
 ± 0.3

